

SHOW PROGRAM

18TH Annual OKLAHOMA CITY Farm Show



April 7-8-9, 2022

THUR & FRI 9AM-5PM | SAT 9AM-4PM | FREE ADMISSION & FREE PARKING
BENNETT EVENT CENTER | OKC FAIRGROUNDS | OKLAHOMA CITY

THE SOUTHERN PLAINS PREMIER FARM AND RANCH EVENT!
ALL THE LATEST IN FARM AND RANCH EQUIPMENT AND SERVICES

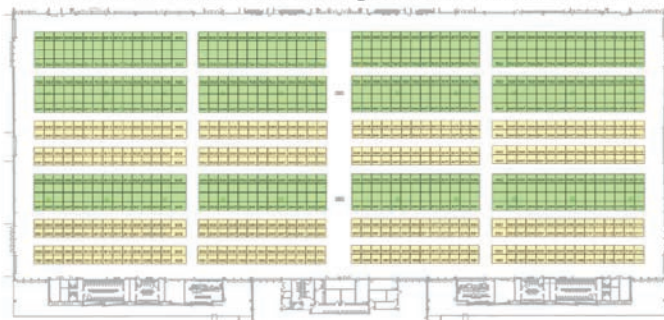
Visit www.OklahomaCityFarmShow.com |

BROADCASTING FROM THE SHOW!



Midwest Shows Inc. | 1-800-873-1411 | www.MidwestShows.com
PEORIA | TULSA | DAKOTA | SIOUX FALLS | HAWKEYE | OKLAHOMA CITY

VISIT THE WEBSITE TO EXPLORE
THE INTERACTIVE FLOOR PLAN!
www.OklahomaCityFarmShow.com



REGISTER AND WIN
\$1000 IN SHOWBUCKS!
Drawing at 1pm daily



WIN
A NEW SPARTAN MOWER!

- Daily test drives
- Drawing on Saturday



CATTLE HANDLING EQUIPMENT DEMONSTRATIONS

- See the latest equipment put to the test!
- Twice daily

~ Supported by



FREE COFFEE & ROLLS DAILY UNTIL 10AM



OKLAHOMA CITY
Farm Show

Welcome! To the 2022 Oklahoma City Farm Show!

The 18th Annual Oklahoma City Farm Show is set to feature the latest agricultural machinery, equipment, technology, and services from hundreds of exhibitors representing more than 1,000 products and services.

Indoor exhibits will fill the Bennett Event Center, along with outdoor exhibits located directly in front of the event center. The show is free to attend and there is plenty of free parking at the OKC Fairgrounds complex.

Attendees can stay up to date on the event and view the interactive show floor plan at the event website, OklahomaCityFarmShow.com. The interactive floor plan provides the most up-to-date exhibitor information, along with contact information and exhibit location.

Social media users can also stay informed of daily event announcements and interact with fellow attendees and exhibitors by following the show at [facebook.com\OklahomaCityFarmShow](https://facebook.com/OklahomaCityFarmShow).

Great food, events, music, and prizes

In addition to more than 150,000 square feet of agricultural and ranching exhibits, the show kicks off each morning with complimentary coffee and rolls until 10 a.m. Early attendees can also take advantage of the opportunity to sign up for the daily \$1,000 Showbucks prize drawing, sponsored by Great Plains Kubota. The Showbucks drawing will be held each day at 1p.m. Showbucks can be used as cash to purchase products

from show exhibitors. Attendees can sign up for the drawing at the Great Plains Kubota exhibit.

Live cattle chute demonstrations will be featured indoors in the Centennial building at 10 a.m. and 1:15 p.m. daily. These live demonstrations put the latest cattle chutes to the test in side-by-side demonstrations with live cattle. Cattle chutes from up to ten companies will be featured and demonstrations will be moderated by experienced livestock handlers and industry professionals. The demonstrations are supported by Priefert and OKC West Livestock Market. Each demonstration also features the chance to win a \$500 credit towards the purchase of a cattle chute from any of the featured companies.

Spartan Mowers will be offering

a Ride-and-Drive demonstration with its zero-turn riding mowers. Attendees who take a test drive on any day of the show will be entered in a drawing to win a new Spartan Zero-Turn mower, given away at 3 p.m. on Saturday. The winner does not need to be present to win.

Returning this year, country singer, Rusty Rierson, will perform daily acoustic shows inside the Bennett Event Center. Rusty is a Kansas native and has produced eight albums and performed across the country. Rusty always pays tribute to George Strait, Don Williams, and some of his other heroes, as well as his own music.

“We are excited to be hosting the 18th Annual Oklahoma City Farm Show in support of Oklahoma’s great farm and ranch industry,”

said show manager, Penny Swank. “The state-of-the-art Bennett Event Center provides a clean and comfortable climate-controlled environment. It is a great facility and free admission and plenty of free parking make for an easy and enjoyable experience.”

The Oklahoma City Farm Show runs April 7 to 9 at the Bennett Event Center, located on the OKC Fairgrounds Complex in Oklahoma City. Show hours are 9 a.m. to 5 p.m. on Thursday and Friday, and 9 a.m. to 4 p.m. Saturday. The OKC Fairgrounds complex is located off NW 10th Street in Oklahoma City, between I-44 and May Avenue. For more information on the Oklahoma City Farm Show, including the most current event schedules, visit OklahomaCityFarmShow.com. ♦

2022 Annual OKC Farm Show Events Schedule

Dates: April 7, 8, & 9, 2022 • Location: Bennett Event Center, Oklahoma City, OK

EVENT	THURSDAY-APRIL 7	FRIDAY-APRIL 8	SATURDAY-APRIL 9
Exhibits — All locations	9 A.M. – 5 P.M.	9 A.M. – 5 P.M.	9 A.M. – 4 P.M.
Producer Appreciation Event — Free Coffee and Rolls Location: Bennett Event Center	9 A.M. – 10 A.M.	9 A.M. – 10 A.M.	9 A.M. – 10 A.M.
\$1,000 Showbucks Drawing <i>*Prize is good for purchasing merchandise/services from show exhibitors only.</i> <i>*Must be present to win</i> <i>*Sponsored by: Great Plains Kubota</i>	Registration before 1 P.M. Drawing at 1 P.M.	Registration before 1 P.M. Drawing at 1 P.M.	Registration before 1 P.M. Drawing at 1 P.M.
Commercial Cattle Grading and Scholarship Awards Competition <i>*Scholarship for Oklahoma youth planning to pursue post secondary ag education in Oklahoma</i> <i>*Sponsors: American Farmers & Ranchers</i>	Winners Announced		
Rusty Rierson —Live Music Performances	Daily at Bennett Center	Daily at Bennett Center	Daily at Bennett Center
Cattle Handling Demonstrations <i>*\$500 Credit towards cattle chute drawing</i> <i>*Sponsors: OKC West and Priefert</i>	10 A.M. & 1:15 P.M.	10 A.M. & 1:15 P.M.	10 A.M. & 1:15 P.M.
Spartan Mower Giveaway <i>*Sponsors: Spartan Mowers</i>	Test Drive to register at the outdoor test drive area	Test Drive to register at the outdoor test drive area	Drawing 3 P.M.

Thank you! 2022 Oklahoma City Farm Show Sponsors & Supporters

- **American Farmers and Ranchers**
Sponsor: Scholarship competition
- **Behlen Country**
Sponsor: Scholarship competition
- **Ddee Haynes**
Volunteer/supporter: Scholarship competition, many hours of hard work to manage, promote, and execute scholarship competition
- **Hilton Garden Inn — OKC Airport**
Partner: Host Hotel
- **Great Plains Kubota**
Sponsor: Daily \$1,000 Showbucks drawing
- **Oklahoma Career Tech Agriculture Education Division**
Sponsor: Scholarship competition, registration and scoring
- **Oklahoma Dept. of Agriculture Food and Forestry**
Sponsor: Scholarship competition, Orientation and Grading seminar
- **Oklahoma State University 4-H Extension**
Sponsor: Scholarship competition, registration and scoring
- **OKC West Livestock Market**
Sponsor: Scholarship competition, competition venue and cattle provider
Sponsor: Scholarship competition, Rick Jones \$2,000 Memorial Scholarship endowment
- **Priefert**
Sponsor: Scholarship competition, supplier of chute as prize for top team
Sponsor: Cattle Handling Equipment demonstration, provider of equipment and support
- **Spartan Mowers**
Sponsor: Spartan mower test drive and prize drawing

GrassWorks Weed Wiper kills weeds, saves legumes and is the economical, easy and efficient application for weed management



GrassWorks Weed Wiper, the ultimate weed control system, eliminates any drift and drip concerns onto your legumes, grasses or crops. This roll-on paint brush application provides the following:

- Costs pennies per acre in chemical use;
- Quick and easy to apply;
- Can be used even with windy conditions;
- Eliminates the worry of drift problems; and
- Kills only the weeds, not your crop, allowing no drift and no drip.

The GrassWorks Weed Wiper weed control system will work and be totally different from any other contact

applicator due to the rotating steel drum. As it is driven it turns in the opposite direction that the GrassWorks Weed Wiper is traveling, so you get a good wiping action on the plants that you are trying to get rid of. This rotating action does several things.

First, it allows us to run the carpet material very saturated and therefore have a lot of chemical available to apply to the targeted weeds. Because it is rotating, it eliminates the drip.

Second, it is applying the chemical to the bottom or underside of the leaves and stems, allowing plant kill to be easier because of greater porosity. This is applying the

chemicals to the weakest part of the weed.

Third, with the adjustable height we are only putting the chemicals on the targeted weeds and not wasting chemicals on grasses and clovers that we want to keep. Adjustable height ranges from zero inches to 5 feet.

We manufacture pull type and tractor mount units from 3 foot to 50 foot. Many successful applications are being used for hay and pasture, perennial peanuts, food plots, peanuts, sod farms, fruit orchards, etc.

For more information, call us at 888-80-WIPER or visit our website at www.weedproblems.com.

We build and farm with American pride. ♦

Visit our website at www.hpj.com

For breaking up hardpan or zone building, nobody does it better than ...

"THE MULCHER" by

Booth #3030
Bennett Building

Agri-Products Inc.

This SUB-SOILER does not put clods on top, destroy residue or dry your ground. Great for no-till! We have 3 Point & Pull Models for Sale or Lease. Lease \$5.50/Acre. We Also Sell New Machines!

DALE'S SALES

13530 E. Rupe Ave. • Fairmont, OK 73736
Dale & Steve Niehus, Owners • (580) 358-2217
www.dalesales.net

KILL WEEDS

FOR LESS THAN A DOLLAR PER ACRE

Weed Management for Row Crops, Hay and Pasture

Eliminates Pigweed, Johnsongrass, Foxtail, Thistles Ragweed And Any Other Noxious Weeds.

NO DRIP • NO DRIFT

GrassWorks Weed Wiper™

The Rotating Weed Wiper That Works!

"The Fast, Efficient and Economical Way"

"The Proven Tool for Weed Control"

- Pennies per acre
- Can be applied in windy conditions
- No drip, no drift
- Roll on paint brush application



GrassWorks MANUFACTURING

SEE US AT BOOTH #2025

888-80-WIPER • 479-790-1091 • WWW.WEEDPROBLEMS.COM
MFG. IN USA

GREEN'S WELDING & SALES



10' FEED BUNK

Portable Working Alleys
Portable Panels • Creep Feeders
Portable Bulk Bins 1 & 3 Ton
Bulk Feed Bins 1, 3 & 5 Ton
10' Steel Feed Bunks



3 TON PORTABLE BULK FEED BIN



LIVESTOCK HANDLING & FEEDING EQUIPMENT

See us at the Oklahoma City Farm Show
Booth #4105

Appleton City, MO • 660-476-5598
www.greenswelding.com

Rawhide Portable Corral

John McDonald knows a thing or two about livestock equipment after working with cattle and rodeo livestock most of his life. Years spent hauling a portable arena across America for televised bull riding events allowed him to put his experience and knowledge to the test when it came to portable corrals. His family will joke about not being able to throw away anything he had notes on, because that item could just hold the prototype idea or drawing for his next big design.

In 2002 John and his family relocated to Abilene, Kansas, to fulfill his dream of designing a portable corral that would be easier than the other systems on the market. After working with multiple prototypes and cattle producers in the local area John finally introduced his original Rawhide Portable Corral design to the public at a farm show in Kansas. It could be set up by one person without any lifting and it could be done quickly; yet it could also be pulled down the road at highway speeds, ensuring that no time would be wasted while catching cattle. It was everything he wanted it to be.

John's wife, Mary, joined the business in 2005 because it was growing at such a rate that he couldn't handle building the corrals, selling them and all of the office and bookwork necessary. Employee numbers also began to grow as he grew his business; prompting him to move to new locations in Abilene a few times, ultimately landing in the current location in 2013.

Over the years he made changes to the system; some at the request of customers and others just so that it would work better for the producers. The best change he will tell you is the electric over hydraulic lift for every jack on the system. John's design was the first portable corral on the market to offer the hydraulic lift option.

After selling his original design for five years or so he envisioned an even better design. Customers wanted to do more with the system and he wanted to break away from the copy-cat designs on the market. In answer to this he developed the Processor which offers the same concept of pen configurations as his old design but he was able to make the transport wheels permanent on the system and a manual adjustable alley is standard on every model. Most customers note the obvious difference is that it's the gooseneck model of the portable corral.

The Processor continues to be the most popular model and is offered in three sizes for the convenience of ranchers and cattle producers throughout the world. The main feature with this design is the ability to customize the corral upon ordering by including a hydraulic alley, head gate or loading chute. Any

combination of options is available on a Processor. Whether you simply want to catch your cattle or process them on site and load them into a trailer from the pasture, you are able to do so with the Processor.

The design of the Processor continues to impress cattle producers with its versatility and ease of use. The permanent sheeted adjustable alley aids with working your livestock, whether it is done on site or in the field. The adjustable alley can be sized from 30 inches down to 16 inches; either manually or hydraulically.

In 2016 John decided to build his older design again; only this time it had one major change. The transport wheels are now permanent. The Rawhide Original is still a bumper pull model because it is not as heavy as the Processor, but other than that new update it's pretty much the same. The permanent wheels make the corral much safer as there is no chance of it tipping over like competing corrals. A temporary alley can be made for those that find themselves in need of one. The Original comes in only two sizes, Standard and Large, and does not have the capability of options.

The most notable features of the Rawhide corrals are that they are easy to set up and they are easy to transport. Rawhide means it when they say that one person can open up the corral without lifting a panel. This will continue to be the model as we move forward with our newer designs.

Customers can manipulate the panels so it is not just one big pen, but two, three or even four pens for sorting, as one can never have enough pens when it comes to working cattle. Rawhide leaves it up to the customer on how they utilize their system. When each customer picks up their system, which Rawhide assures at least 80% of their customers come to Abilene to pick up their own

unit and haul it home, they will receive a demonstration.

Some customers are brand new to the product and some purchase a system with knowledge of it after working with neighbors or borrowing someone else's. With each purchase of a corral the customer receives a diagram of the unit, a bird-eye view so to speak, showing how the panels are configured. The most important part is that it shows how the panels fold up.

Every panel on a Rawhide Portable Corral has a solid rubber wheel positioned in a specific location so that when folded up the panels will all fold flush against the others. This is especially important with the larger size systems as the racks holding the panels are only so big. This ensures that the system is road-width legal and is not considered oversized.

With the diagrams a customer will also be shown different ways they can configure the panels. Again, the system is theirs to do what they want with it and every pasture or field is different. However, the diagrams help with the learning curve.

Rawhide staff will also give a demonstration on a system before the customer leaves. Much the same as the diagram, it helps the customer understand why certain features were added and gives them an idea of what to do with their own. Each customer is encouraged to take the system home and unhook it from their truck, unfold it and then fold it back up at least once before working with cattle. This way they understand the hydraulic system better and are not in a rush.

The electric over hydraulic jack has been so popular that Rawhide now offer customers the option to buy the Hydraulic Lift Kit so that they may upgrade existing equipment of their own. A lift kit includes the jack, power unit, solar panel and the option of including a battery at time of purchase.

John and Mary McDonald run the family business out of their manufacturing plant in Abilene, Kansas, which is where all Rawhide Portable Corral's are built. They proudly employ thirty employees from around the area and John emphasizes quality work to every one of them.

Many customers want to know about warranty work on a system like this and the McDonald family is only too happy to inform them of theirs. All welding work and assembly is done by their employees so anything that may happen to those welds or to the panels John and Mary will stand behind and call it their Lifetime Warranty.

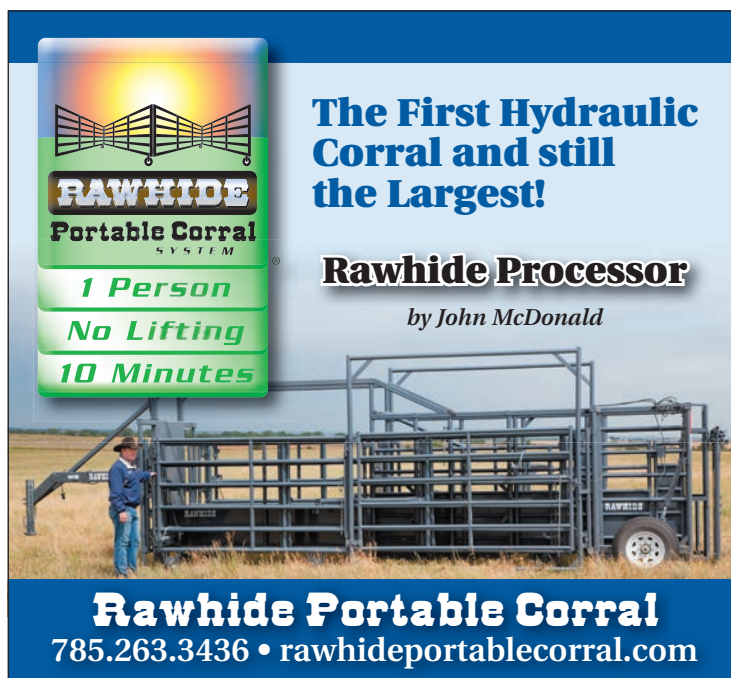
Other parts on the system that are purchased from vendors including the hydraulic cylinders, transport wheels, power unit and solar panel are given a one-year warranty. If any customer has a concern or an issue, they can simply call Rawhide and someone will help them out.

Two of their three children

work at the plant with them, truly making the business a small family affair. When calling in to get information about a unit you will most likely talk to Mary or Ethan McDonald, son, about the corrals; Cassy Wilson, daughter, handles Accounts Receivables, Accounts Payable, Marketing and Human Resources side of the business.

Rawhide Portable Corral, Inc is proud to have corrals in 43 states and three countries which is a true showing of how these units work in a multitude of terrains. Over the last few years, they have worked with a couple of dealers to help get their corrals to other parts of the United States. At this time there are dealers in south Texas, South Dakota and potentially the Idaho, Washington and Montana areas. The corrals are all still built in Abilene.

For more information about Rawhide Portable Corral's and to view product videos visit the Rawhide website at www.rawhide-portablecorral.com, find them on Facebook or call 785-263-3436. ♦



RAWHIDE
Portable Corral
SYSTEM

1 Person
No Lifting
10 Minutes

The First Hydraulic Corral and still the Largest!

Rawhide Processor
by John McDonald

Rawhide Portable Corral
785.263.3436 • rawhideportablecorral.com



VISIT BOOTH 2041-2043 TO TALK TO A LOCAL REP AND LEARN ABOUT THE NEXGEN VARIETIES BEST SUITED FOR YOUR AREA!

NexGen
The Next Generation of Cotton

www.nexgencottonseed.com

americotnexgen americotinc nexgencotton

Americot® and the Boll Design, NexGen® and The Next Generation of Cotton® are registered trademarks of Americot, Inc. #C19210KCFS

2022 Oklahoma City Farm Show

April 7, 8, 9, 2022



OKLAHOMA CITY
Farm Show

Outdoor Exhibits

ENTRANCE

900	901	902	903	904	905	906	907	908	909
-----	-----	-----	-----	-----	-----	-----	-----	-----	-----

910	911	912	913	914	915	916	917	918	919
-----	-----	-----	-----	-----	-----	-----	-----	-----	-----

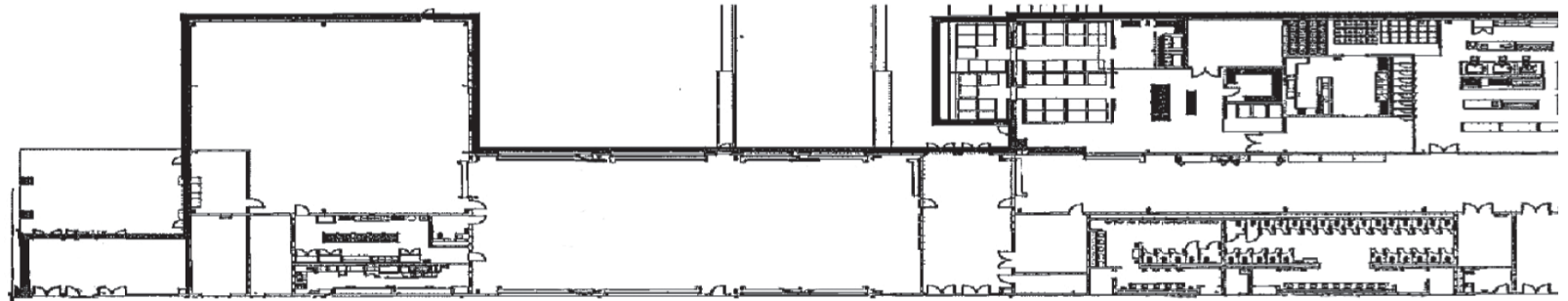
1901	1900	1801	1800	1701	1700	1601	1600	1501	1500	1401	1400	1301	1300	1201	1200	1101	1100
1803	1902	1803	1802	1703	1702	1603	1602	1503	1502	1403	1402	1303	1302	1203	1202	1103	1102
1905	1904	1805	1804	1705	1704	1605	1604	1505	1504	1405	1404	1305	1304	1205	1204	1105	1104
1907	1906	1807	1806	1707	1706	1607	1606	1507	1506	1407	1406	1307	1306	1207	1206	1107	1106
1909	1908	1809	1808	1709	1708	1609	1608	1509	1508	1409	1408	1309	1308	1209	1208	1109	1108
1911	1910	1811	1810	1711	1710	1611	1610	1511	1510	1411	1410	1301	1310	1213	1210	1111	1110

Bennett Event Center

OKC Fairgrounds, 3101 Gordon Cooper Blvd, Oklahoma City, OK

2022 Oklahoma City Farm Show

Indoor Map



700	8000	8002	8004	8006	8008	8010	8012	8014	8016	8018	8020	8022	8024	8026	8028	8030	8032	8034	8036	8038	8040	8042	8044	8046	8048	8050	8052	8054
	A8000	A8002	A8004	A8006	A8008	A8010	A8012	A8014	A8016	A8018	A8020	A8022	A8024	A8026	A8028	A8030	A8032	A8034	A8036	A8038	A8040	A8042	A8044	A8046	A8048	A8050	A8052	A8054
	A7001	A7003	A7005	A7007	A7009	A7011	A7013	A7015	A7017	A7019	A7021	A7023	A7025	A7027	A7029	A7031	A7033	A7035	A7037	A7039	A7041	A7043	A7045	A7047	A7049	A7051	A7053	A7055
	7001	7003	7005	7007	7009	7011	7013	7015	7017	7019	7021	7023	7025	7027	7029	7031	7033	7035	7037	7039	7041	7043	7045	7047	7049	7051	7053	7055
	7000	7002	7004	7006	7008	7010	7012	7014	7016	7018	7020	7022	7024	7026	7028	7030	7032	7034	7036	7038	7040	7042	7044	7046	7048	7050	7052	7054
	A7000	A7002	A7004	A7006	A7008	A7010	A7012	A7014	A7016	A7018	A7020	A7022	A7024	A7026	A7028	A7030	A7032	A7034	A7036	A7038	A7040	A7042	A7044	A7046	A7048	A7050	A7052	7054
	A6001	A6003	A6005	A6007	A6009	A6011	A6013	A6015	A6017	A6019	A6021	A6023	A6025	A6027	A6029	A6031	A6033	A6035	A6037	A6039	A6041	A6043	A6045	A6047	A6049	A6051	A6053	6055
	6001	6003	6005	6007	6009	6011	6013	6015	6017	6019	6021	6023	6025	6027	6029	6031	6033	6035	6037	6039	6041	6043	6045	6047	6049	6051	6053	6055
	6000	6002	6004	6006	6008	6010	6012	6014	6016	6018	6020	6022	6024	6026	6028	6030	6032	6034	6036	6038	6040	6042	6044	6046	6048	6050	6052	6054
	5001	5003	5005	5007	5009	5011	5013	5015	5017	5019	5021	5023	5025	5027	5029	5031	5033	5035	5037	5039	5041	5043	5045	5047	5049	5051	5053	5055
	5000	5002	5004	5006	5008	5010	5012	5014	5016	5018	5020	5022	5024	5026	5028	5030	5032	5034	5036	5038	5040	5042	5044	5046	5048	5050	5052	5054
	4001	4003	4005	4007	4009	4011	4013	4015	4017	4019	4021	4023	4025	4027	4029	4031	4033	4035	4037	4039	4041	4043	4045	4047	4049	4051	4053	4055
706	4000	4002	4004	4006	4008	4010	4012	4014	4016	4018	4020	4022	4024	4026	4028	4030	4032	4034	4036	4038	4040	4042	4044	4046	4048	4050	4052	4054
707	A4000	A4002	A4004	A4006	A4008	A4010	A4012	A4014	A4016	A4018	A4020	A4022	A4024	A4026	A4028	A4031	A4033	A4035	A4037	A4039	A4041	A4043	A4045	A4047	A4049	A4051	A4053	A4055
708	A3001	A3003	A3005	A3007	A3009	A3011	A3013	A3015	A3017	A3019	A3021	A3023	A3025	A3027	A3029	A3031	A3033	A3035	A3037	A3039	A3041	A3043	A3045	A3047	A3049	A3051	A3053	A3055
709	3001	3003	3005	3007	3009	3011	3013	3015	3017	3019	3021	3023	3025	3027	3029	3031	3033	3035	3037	3039	3041	3043	3045	3047	3049	3051	3053	3055
710	3000	3002	3004	3006	3008	3010	3012	3014	3016	3018	3020	3022	3024	3026	3028	3030	3032	3034	3036	3038	3040	3042	3044	3046	3048	3050	3052	3054
711	2001	2003	2005	2007	2009	2011	2013	2015	2017	2019	2021	2023	2025	2027	2029	2031	2033	2035	2037	2039	2041	2043	2045	2047	2049	2051	2053	2055
712	2000	2002	2004	2006	2008	2010	2012	2014	2016	2018	2020	2022	2024	2026	2028	2030	2032	2034	2036	2038	2040	2042	2044	2046	2048	2050	2052	2054
	1001	1003	1005	1007	1009	1011	1013	1015	1017	1019	1021	1023	1025	1027	1029	1031	1033	1035	1037	1039	1041	1043	1045	1047	1049	1051	1053	1055

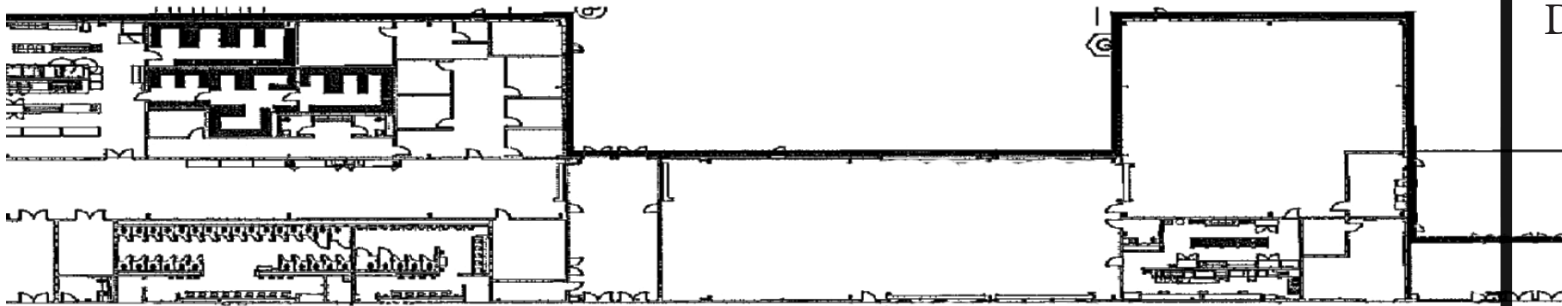


Bennett Event Center
 OKC Fairgrounds,
 3101 Gordon Cooper Blvd,
 Oklahoma City, OK

MAIN EN
 ↓ outdoor

April 7, 8 & 9 2022

Walkway to Livestock Demonstrations



8056	8058	8060	8062	8064	8066	8068	8070	8072	8074	8076	8078	8080
A8056	A8058	A8060	A8062	A8064	A8066	A8068	A8070	A8072	A8074	A8076	A8078	A8080
A7057	A7059	A7061	A7063	A7065	A7067	A7069	A7071	A7073	A7075	A7077	A7079	A7081
7057	7059	7061	7063	7065	7067	7069	7071	7073	7075	7077	7079	7081

8082	8084	8086	8088	8090	8092	8094	8096	8098	8100	8102	8104	8106	8108	8110
A8082	A8084	A8086	A8088	A8090	A8092	A8094	A8096	A8098	A8100	A8102	A8104	A8106	A8108	A8110
A7083	A7085	7087	A7089	A7091	A7093	A7095	A7097	A7099	A7101	A7103	A7105	A7107	A7109	A7111
7083	7085	7087	7089	7091	7093	7095	7097	7099	7101	7103	7105	7107	7109	7111

7056	7058	7060	7062	7064	7066	7068	7070	7072	7074	7076	7078	7080
A7056	A7058	A7060	A7062	A7064	A7066	A7068	A7070	A7072	A7074	A7076	A7078	A7080
A6057	A6059	A6061	A6063	A6065	A6067	A6069	A6071	A6073	A6075	A6077	A6079	A6081
6057	6059	6061	6063	6065	6067	6069	6071	6073	6075	6077	6079	6081

7082	7084	7086	7088	7090	7092	7094	7096	7098	7100	7102	7104	7106	7108	7110
A7082	A7084	A7086	A7088	A7090	A7092	A7094	A7096	A7098	A7100	A7102	A7104	A7106	A7108	A7110
A6083	A6085	A6087	A6089	A6091	A6093	A6095	A6097	A6099	A6101	A6103	A6105	A6107	A6109	A6111
6083	6085	6087	6089	6091	6093	6095	6097	6099	6101	6103	6105	6107	6109	6111

6056	6058	6060	6062	6064	6066	6068	6070	6072	6074	6076	6078	6080
5057	5059	5061	5063	5065	5067	5069	5071	5073	5075	5077	5079	5081

6082	6084	6086	6088	6090	6092	6094	6096	6098	6100	6102	6104	6106	6108	6110
5083	5085	5087	5089	5091	5093	5095	5097	5099	5101	5103	5105	5107	5109	5111

5056	5058	5060	5062	5064	5066	5068	5070	5072	5074	5076	5078	5080
4057	4059	4061	4063	4065	4067	4069	4071	4073	4075	4077	4079	4081

5082	5084	5086	5088	5090	5092	5094	5096	5098	5100	5102	5104	5106	5108	5110
4083	4085	4087	4089	4091	4093	4095	4097	4099	4101	4103	4105	4107	4109	4111

4056	4058	4060	4062	4064	4066	4068	4070	4072	4074	4076	4078	4080
A4057	A4059	A4061	A4063	A4065	A4067	A4069	A4071	A4073	A4075	A4077	A4079	A4081
A3057	A3059	A3061	A3063	A3065	A3067	A3069	A3071	A3073	A3075	A3077	A3079	A3081
3057	3059	3061	3063	3065	3067	3069	3071	3073	3075	3077	3079	3081

4082	4084	4086	4088	4090	4092	4094	4096	4098	4100	4102	4104	4106	4108	4110
A4083	A4085	A4087	A4089	A4091	A4093	A4095	A4097	A4099	A4101	A4103	A4105	A4107	A4109	A4111
A3083	A3085	A3087	A3089	A3091	A3093	A3095	A3097	A3099	A3101	A3103	A3105	A3107	A3109	A3111
3083	3085	3087	3089	3091	3093	3095	3097	3099	3101	3103	3105	3107	3109	3111

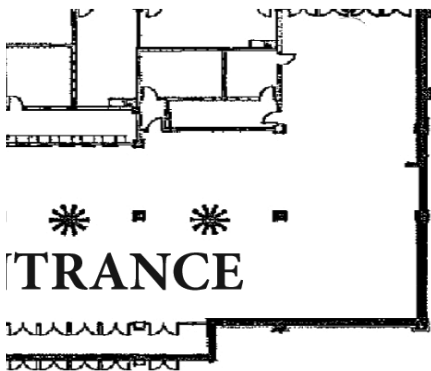
3056	3058	3060	3062	3064	3066	3068	3070	3072	3074	3076	3078	3080
2057	2059	2061	2063	2065	2067	2069	2071	2073	2075	2077	2079	2081

3082	3084	3086	3088	3090	3092	3094	3096	3098	3100	3102	3104	3106	3108	3110
2083	2085	2087	2089	2091	2093	2095	2097	2099	2101	2103	2105	2107	2109	2111

2056	2058	2060	2062	2064	2066	2068	2070	2072	2074	2076	2078	2080
1057	1059	1061	1063	1065	1067	1069	1071	1073	1075	1077	1079	1081

2082	2084	2086	2088	2090	2092	2094	2096	2098	2100	2102	2104	2106	2108	2110
1083	1085	1087	1089	1091	1093	1095	1097	1099	1101	1103	1105	1107	1109	1111

- 800
- 801
- 802
- 803
- 804
- 805
- 806
- 807
- 808
- 809
- 810



Exhibits ↓

SHOW HOURS } THURSDAY & FRIDAY: 9 A.M. - 5 P.M. / SATURDAY: 9 A.M. - 4 P.M.

www.OklahomaCityFarmShow.com
Free Admission! Free Parking!

Diamond W Corrals' portable cattle handling equipment helps ranchers

Diamond W Corrals has unveiled its Cow-Calf Corral Expander, which offers the latest in innovation, and is the newest addition in the company's portable cattle handling equipment line to help ranchers when time is of the essence.

With an expansive 1,000-square feet of extra working space, the Cow-Calf Corral Expander consists of a 40-foot panel with an additional six panels—three on each end. The unit can be used alone or as an addition to expand an existing setup. The 46-foot unit weighs 4,840 pounds and is transported on four 11L 15 implement tires while the panels roll on two 13-inch tires and four 10-inch casters. The two 4-foot walk-through gates ensure an easy exit from either end. Adding to the safety features are two transport chains that tie to the rancher's corral when set up. Other safety measures include side and rear stop, turn and clearance transport lights.

Other features include:

- Two 5,000-pound jacks that stabilize the main frame when setting up on uneven ground.
- Transport lights to safely move equipment on highways and after sunset.
- Four winches with safety chains to help relieve the pressure on the winches and transfer the weight of the unit to the chains during travel and reduce the amount of human power needed to set up and take down the unit.
- A 2 5/16-inch ball hitch with multiple height adjustment, making it easy to pull with different pickups or equipment.
- Four outriggers with two on the main frame and two on the panels that dig into the ground when preparing to setup to work with livestock.

Another Diamond W Corrals' portable unit is the 36-foot long Cow-Calf Corral that has dual rear wheels and is pulled with a 2-inch ball hitch. The unit travels on six 11L 15 implement tires. To add to the ease and safety of the set up, there are three 4-foot personal gates and four 6-foot cattle gates.

Regardless of the model, each of the three pieces attach together to make one large unit and each piece is sold separately. A rancher can set up the corral in 10 minutes and each side pen can be set up in 10 minutes

each and be ready to go to work in a half hour.

The three pieces of equipment used together can hold or divide a large number of livestock. The livestock will flow through any pen and will not bother any of the other pens when loading out. Panels are easy to fold and unfold. Added features of the winches and chains ensure that tasks are completed safely and efficiently.

Diamond W Corrals are manufactured by Burlington Welding LLC, Cherokee, Oklahoma. Look for company's booth at the Oklahoma City Farm Show, April 7 to 9. For more information call 580-596-3381, email diamondwcorrals@yahoo.com or visit www.diamondwcorrals.com. ♦



Diamond W Corrals

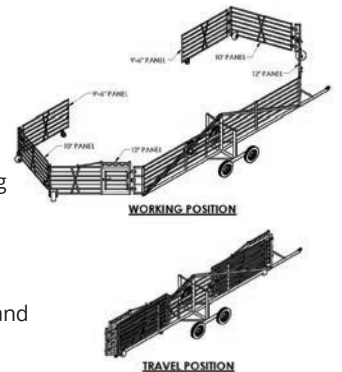
Cow Calf Corral with Expander Wings

Manufactured by Burlington Welding, LLC
Patent Pending

This round 1 7/8" tube corral has all the bells and whistles. The dual rear wheel axle gives you a smooth pull up to highway speeds and unsurpassable maneuverability within the field. All panels are 6' 2" tall, and the weight of the corral is 7,660 pounds.

Always keeping safety in mind, there 3 — 4' walk-through gates and 4 — 6' walk-through gates, ensuring you have an escape, no matter where you are in the main pen. Double center divide gates, each 9' in 12' frame, make sorting your cattle easier than ever.

Corrals are equipped with transport lights for added security when moving the unit after dark. 2" ball hitch and 5000 pound jack add to the ease of transport.



580-596-3381 • diamondwcorrals.com

THE BRAND YOU CAN DEPEND ON. ALL DAY, EVERYDAY.

See us at the Oklahoma City Farm Show
BOOTH #4105



LIFE TIME BALE ARM WARRANTY.
FIVE- YEAR STRUCTURAL WARRANTY.
TWO- YEAR SYSTEM WARRANTY.
UNMATCHED CUSTOMER SERVICE.

HydraBed
Sabetha, KS | 800-530-5624
www.hydrabeds.com

Check us out!
www.hpj.com

2022 Exhibitor Booth Listing

- A—
 A&M Feeds..... 4055
 Advanced Body Scan...6052-6054
 Advantage Ag..... 1063-2066
 Aerus Air Purification..... 5017
 AFR/OFU
 Cooperative.....2104-A2110
 Ag Risk Management and
 Insurance, LLC 5026-5028
 Agco 7039-8046
 Agridyne, LLC..... 2085
 AgRisk Advisors 4089
 Air Seeder Services 6068
 AirMedCare Network..... 5002
 Alternative Construction
 Parts, Inc. 6082
 American Windpower..0715-0716
 Americot, Inc. 2041-2043
 Anchor Paving 4077
 APV America.....4100-A4104
 Arcusin 4045-4047
 Ariens Mowers..... 7031-8034
 Arrowquip 3049-4054
 Ary Land Co..... 6066
- B—
 Bartlett CO-OP Assoc... 1501-1602
- Base Camp Leasing..... 5000
 Bass Pro Shops..... 3032
 Bedrock & Sons, LLC..... 0909
 Begay's Navajo Jewelery.. 5036-5038
 Behlen Country 1401-1500
 Bestway.....6073-A7080
 Better Barns..... 3108-3110
 Big Iron Auction Co. ... 5046-5048
 Blattner Feedlot
 Construction..... 1701-1800
 BlueCross and BlueShield of
 Oklahoma..... 6018
 Bobcat of
 Oklahoma City7083-A8088
 Bohlmann, Inc. 4012-4016
 Bradford Buildings.....6056-6058
 Brandt Equipment.....6065-7070
 Brashear Concrete Feeders &
 Rubber Water Tanks ..0803-0804
 Breezy Mills of
 Iowa, LLC 3015-3019
 Brute Cattle
 Equipment 5108-5110
 Brute Cattle Equipment - Dodge
 Manufacturing..... 5108-5110
 Burlington
 Welding, LLC.....1100-A1106

- Butler Beds..... 1073-2074
- C—
 C5 MFG, LLC 1035-2038
 Callicrate Banders 5090
 Cardinal Scale 5063
 Cattleac Cattle
 Equipment Co..... 1043-2044
 Central Halliburton
 Comm. Co..... 4033
 Certified Labs..... 3048-3050
 Chisholm Trail
 Bale Beds..... 1035-2038
 CIMR Sales & Service 1505
 Circle M Trailers.....7098-A7104
 Cobett Company 5003
 Crown H Ranch, LLC..... 5093
 Crownline Flat Beds ... 5107-5111
 Cub Cadet Mowers 1505
 Custom
 Flashlights-USA 0800-0801
 Cutco Cutlery..... 3084

- D—
 Dale's Sales 3030
 David's Smok'n Barbeque..... 5089
 DelCo. Diesel Services, Inc.. 3076
 DeWalt Tools..... 1505
 DewEze Mfg..... 1077-2080
 Diamond W Corral
 Products 2109-1106
 Dirttraxxland Clearing..3038-3040
 Dougherty Forestry
 Manufacturing 3001-A4008
 Drinking Post Waterers..... 5098
 Dusty Road Leather Co..... 3028
- E—
 Eagle Plastic / AmeriAg Co.. 5001
 Edison Lighting Supply..... 3062
 Edward Jones - Jared..... 6016
 Edward Jones - Troy 5065
 Energy Curve
 Technology 5019-5021
 Entz Burton & Associates..... 2063
 Euroshine USA, Inc. 5031
 EZE-LATCH 2031

- F—
 Faribanks Scales..... 5075
 Farm Source LLC 5107-5111
 Feed Smart..... 5091
 Fellowship of Christian Farmers,
 International..... 5076-5078
 Fendt 7039-8046
 Fendt 7019-8022
 Ferguson Roof
 Systems..... 3016-3018
 Fieldnet Remote
 Monitoring 2079-2081
 Filson Manufacturing
 Co., Inc. 0910
 First Choice OKC..... 2039
 Five:7
 Equipment, LLC.....7031-A8034
 Foot Pharmacy Direct 4097
 Forever Transport LLC..... 1502
 Free Form Plastic Products .. 4005

- G—
 Gallagher..... 4049-4053
 German Roofing &
 Distributing..... 2091-2093
 Global Sourcing, LLC..3098-6062
 GMLS Industries, Inc. 4057
 GoBob Pipe &
 Steel Sales, LLC..... 1001-2008
 Golden Fox Buildings..... 4057
 Golden Grain Bins 4057

- Grasshopper Lawn
 Equipment 7027-8028
 GrassWorks Mfg., LLC 2025-2029
 Gravely Mowers..... 7031-8034
 Great Plains Kubota..6083-A7094
 Greene Builds, Inc..... 2033
 Green's Welding
 & Sales..... 4105-4107
 Gripstic..... 3024
 Growers Source
 Southwest, LLC..... 4015-4017
- H—
 Health Coverage Source..... 5042
 Heartland
 Soil Services, LLC..... 5079
 Heavybilt Mfg. 3069-A4080
 Hesston..... 7039-8046
 High Plains Journal..... 6110
 Honing by Hardy..... 2001
 Hook Doctor 2067
 Horizon Products /
 Zerk Zapper 5057
 Horse Power Drainage
 Solutions 5085
 Hotsy of
 Oklahoma, Inc. 1053-2054
 Huffman Insurance
 Agency..... 5013-5015
 Hyllo Inc. 4081

- I—
 Iron Wolf /
 Tri State Supply.....4106-A4110
- J—
 John Deere Air Seeder..... 6068
 John Deere Products...6057-7062
 Johnston Seed Company..... 5083
- K—
 Keller Williams 3022
 Ken Carpenter Auction
 & Realty..... 3088
 KFS Farm Supply.....0700-0701
 Kioti Tractors 7031-8034
 Knutson Irrigation
 Design, LLC 2057-2061
 Kraft Tank
 Corporation.....6036-6044
 Kretchmar
 Distributing, Inc. 7027-A8028
 K-Tec..... 7019-8022
 Kubota 6083-7090

- L—
 Landpride..... 6083-7090
 Lankota..... 1095-2098
 Lee Unlimited, Inc..... 5053-5055
 Legacy Steel Buildings..3101-A3103
 Lewis Cattle Oiler..... 2035-2037
 Liberty Mutual /
 Safeco Insurance..... 5035-5037
 Lindsay Irrigation
 Solutions 2079-2081
 LipSense/Senegence 5067
 Livestock Risk Services, Inc.. 5094
 LivestockMarket/
 AuctionTime.com 5095
 Livingston Machinery
 Company 7039-A8046
 Longhorn Earthworks 5022
 Low Mu Tech Dust..... 2030-2032
- M—
 M&E Sales..... 3094
 M-6 Hydraulics..... 5016
 Magness
 Equipment, LLC.....0709-0712

- Martin Till 6070-6074
 Massey Ferguson 7039-8046
 Mattress Firm 6105-A6111
 Meg-Mo Systems..... 5081
 Meyer Manufacturing
 Corporation..... 1083-2086
 Mid-American
 Tool, Inc. 6086-6090
 Midcontinent Livestock
 Supplements..... 5024
 Midwest Energy Ionics..... 3010
 Midwest Exterior Products... 5047
 Midwest Land Group ..5049-5051
 Midwestern Solutions..... 4059
 Miller Gate Openers 5054
 Millner-Haufen Tool Co. 3056
 Minnesota Pneumatic
 Products 5025-6028
 Mix 30..... 2085
 M-M Ranch &
 Farm Supply 7106-7110
 Moly Mfg, LLC /
 Silencer.....6001-A6007
 Moore Water
 Treatment..... 6012-6014
 Morton Buildings, Inc. 5069
 MTD Products..... 1505
 My Wes Poly
 Products 2030-2032

- N—
 National Livestock..... 4085-4087
 Nationwide
 Trailers OKC 1507-1610
 Native Chiropractic..... 6108
 New-Aire Fireplace Systems &
 Wood Fire Ovens 5086-5088
 Nexgen..... 2041-2043
 Norseman Gauge Wheel
 Arm Kits..... 1031-1033
 Notch
 Manufacturing, Inc. ..7105-A8110
 NutraDrip
 Irrigation Systems 3036

- O—
 OKC Tarp & Supply..... 3006
 OKC West Livestock
 Market 5103-5105
 Oklahoma AgCredit2087-2089
 Oklahoma Beef Council..... 5101
 Oklahoma Cattlemen's
 Association 5102
 Oklahoma Chevy
 Team Dealers3083-A4096
 Oklahoma Conservation
 Commission..... 5043
 Oklahoma
 Farm Bureau 4035-4037
 Oklahoma National
 Stockyards..... 5096
 Oklahoma Steel &
 Wire Co, Inc..... 5008-5010
 Operation 320 LLC 5062

- P—
 P & K Equipment, Inc/
 John Deere.....6057-A7062
 Pearson Equipment..... 7106-7110
 PJ Trailers..... 1507-1610
 Pneu-Dart, Inc. 2097-2099
 Poly Water Tanks..... 5059
 Pomp's Tire Service 4029
 Prairie Grain
 Analyzers, Inc. 5058
 Precision Planting
 Clean Sweep 1031-1033

See Exhibitor list, page 22

AGRICULTURAL MACHINERY
sitrex

SaMASZ

OGDEN

RCR812 HAY RUNNER

PRICE BROS. EQUIPMENT CO. WICHITA KANSAS

Call Price Bros. for Local Dealer:
(316) 265-9577
www.pricebroseq.com/shop

SEE US AT THE OKLAHOMA FARM SHOW

2022 Exhibitor Booth Listing

Continued from page 21

Price Bros.
Equipment Co.....6051-A7054
Pride Of The Farm.....5059-5061
Priefert Rodeo & Ranch
Equipment.....7091-A8096
Purple Wave Auction..... 2045

—Q—

Quality Craft Tools.....2053-2055
Quality Liquid Feeds, Inc..... 4043

—R—

Ranch Hand Wire Wizard.... 5060
Rancher Bale Beds..... 1035-2038
Rawhide Portable
Corral, Inc.1407-1510
Renewal By Andersen...6100-6102
Renshaw Farms/Built Better
Enterprises, LLC..... 1021-2022
Ridley Block Operations..... 4083
Ritchey Livestock ID..... 2067
Rivers Edge
Enterprises, LLC..... 5004
RK&R Dozer
Service, LLC.....7077-8080
Rocking Bar Knives 6076
Rostech Technologies 5052
Roto-Mix.....3057-A4058
Round Bale
Solutions, LLC 1011-2018
Rowse Hydraulic
Rakes.....7047-A8054

—S—

S.I. Distributing, Inc..... 1031-2032
San Antonio Steel Company ... 2069
Scentsy 3014
Schaeffer's Specialized
Lubricants2073-2075
Schuck Hitch's2030-2032
Scrapper Pan7019-8022
Sea-90 Ocean
Minerals4073-4075
Seal Smart 2095
Sesaco Corporation..... 5064
Shawnee Milling Company.. 6030
Shoup Manufacturing
Company4001-4003
Shur-Co 3006
Skeeters Market.....2005-2007
Soldier Solutions, LLC..... 6084
Solis Tractors6023-7028
Sooner Scale, Inc 5056
Southwest
Center Pivots.....5009-5011
Southwest Distributing
Company7057-A8066
Southwest Fabricators, Inc.... 2023
Spartan/Intimidator..3025-A4028
Staffent USA Ltd.....2011-2013
Stewart Distributing..... 3080

Stillwater Milling Co / Arrow
Cattle Equipment3049-A4054
Stillwater Milling Company.. 4055
Stine Seed Company..... 4103
Stinger, Inc 6032
Sunrise Lawn
Furniture.....4109-4111
Super Duty Fans0706-0707
Superior Sleep
Experience.....3066-3070
Superior Steel
Sales, LLC1611-1710
Superior Termite &
Pest Control..... 5066
Sure Crop5082-5084
Swanson Ag Wraps 2083

—T—

T & W Tire6000-6002
Tactical Edge Hog Control ... 0911
Tailored Remodeling ...3008-4067
Tarver Sales 1504
Tasko Dist 5004
Texas and Southwestern Cattle
Raisers Association5070-5072
The Big Rack Shack1047-2050
The Flashlight People.Com.. 2051
The Limbsaw
Company, LLC..... 3106
The Railroad Yard5005-5007
The T-Post Hook..... 5087
Thompson Diesel 4011
TKO Solutions /
Pneu-Tek Tire Tools..4019-4021
T-Mobile.....4039-4041
TNR Group 3000
Top Country Sales.....7000-7004
Tractor Bob's.....6019-A7020
Travis Scale Co..... 5063
TriPak Super Lubricants 4061
Triple C
Manufacturing, Inc..1057-2060
Tuff Grid
USA, LLC.....6009-6011
Turbo Diesel of
Oklahoma 5080
Tym Tractors7031-8034

—U—

Uncommon USA, Inc..... 3054
Urad Leather
Conditioner 4063
USDA-NRCS 5033
Utley Ag Sales 1504

—V—

Venture Equipment..... 3082
Vermeer
Corporation.....6037-A7042
Vesta Foundation
Solutions6094-6096
Vision Work's
Camera's 1031-1033

—W—

Walinga USA Inc..... 1089-2092
Wall Bin Hoppers.....6065-A7068
Warner Brothers Seed Co. 4031
Warren Cat6031-A7032
Webster Enterprises6004-6008
Western Livestock Commission
Company 5100
Westway Feed
Products, LLC..... 5099

Whiskey River
Horse Co.....6078-6080
Whitetail Properties
Real Estate5030-5034
Wing It, LLC.....1201-3104
Wingfield Dist. Co. ...3107-A3111
Wireless Sourcing..... 4069
Wood-Mizer, LLC 1709
Woodward Livestock
Auction..... 5012

W-W Livestock
Systems..... 1025-2028

—Y—

Yanmar America
Corporation.....6023-A7028

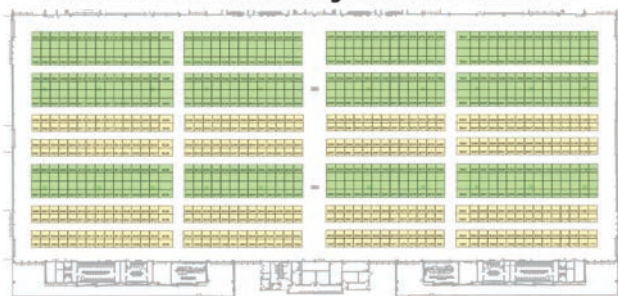
—Z—

Zerk Zapper..... 5057
Zimmatic Pivots2079-2081 ♦

**24" & 26" HEAVY PIPE BUNKS
20' LENGTHS | 20,000 SOLD**



VISIT THE WEBSITE TO EXPLORE
THE INTERACTIVE FLOOR PLAN!
www.OklahomaCityFarmShow.com



405-350-8555

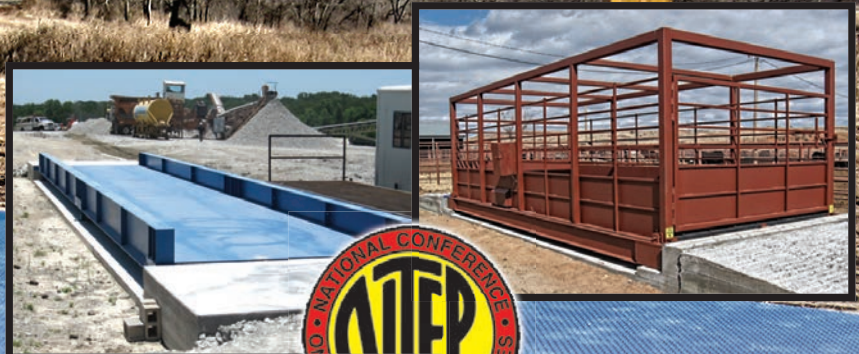
YUKON, OK

WWW.LIFETIMEFEEDBUNKS.COM

Any Animal - Any Load - Every Time!

The accurate, dependable way to increase your profits while reducing your weighing time.

SSI manufactures a complete line of Side Rail and Flat Top model truck scales and livestock scales. All models are NTEP approved and can be made portable.



We also design and build custom units to meet specific needs!

www.soonerscale.com • 1-800-759-3444

2428 S.W. 14th • P.O. Box 82386 • Oklahoma City, OK 73148

- Reduce spread of disease
- Eliminates man power
- Increase daily rate of gain
- Reduce costly stress of cattle & infestation
- No product waste
- Improve overall health on cows and calves



THE NO FLY ZONE



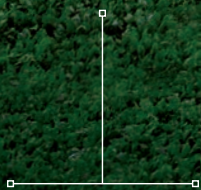
CAPITALIZE ON YOUR INVESTMENT BY PROTECTING YOUR HERD FROM EXTERNAL PARASITES ALL YEAR LONG!

"My favorite thing is I haven't treated a single cow for pink eye and it is very well built. We bought three and I think we are going to buy three more because we are very happy with the simplicity and effectiveness"
-Gabe Ramsey, Falls City NE



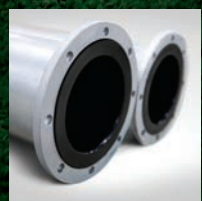
WHERE WHAT IF BECOMES WHAT IS.

WHAT IF a pivot was as easy to use as your smartphone?



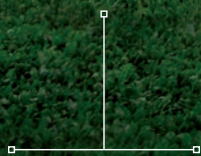
Zimmatic™ advanced control panels

WHAT IF water quality issues were no longer an issue?



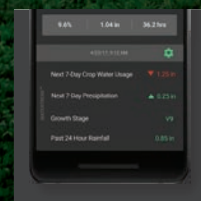
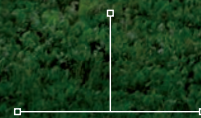
Zimmatic poly-lined pipe

WHAT IF irrigation monitoring was accessible to every grower?



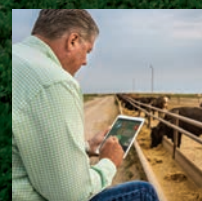
FieldNET Pivot Watch™

WHAT IF a monitor and control platform could help you see into the future?



FieldNET with WaterTrendSM

WHAT IF irrigation recommendations were generated daily, automatically, with no extra equipment?



FieldNET Advisor™

For more than 50 years, Lindsay has turned growers' "what ifs" into "what is" using customer-first innovation to continuously make irrigation more efficient and more effective.

CONTACT YOUR LOCAL ZIMMATIC DEALER TO LEARN MORE ABOUT OUR SOLUTIONS.

ZIMMATIC
BY LINDSAY

FIELDNET
BY LINDSAY

zimmatic.com

© 2021 Lindsay Corporation. All rights reserved. Zimmatic, FieldNET, FieldNET Pivot Watch, WaterTrend and FieldNET Advisor are registered trademarks of Lindsay Corporation.

LINDSAY