

SHOW PROGRAM

17TH Annual OKLAHOMA CITY Farm Show



April 15-16-17, 2021

THUR & FRI 9AM-5PM | SAT 9AM-4PM | FREE ADMISSION & FREE PARKING
BENNETT EVENT CENTER | STATE FAIR PARK | OKLAHOMA CITY

THE SOUTHERN PLAINS PREMIER FARM AND RANCH EVENT!
ALL THE LATEST IN FARM AND RANCH EQUIPMENT AND SERVICES

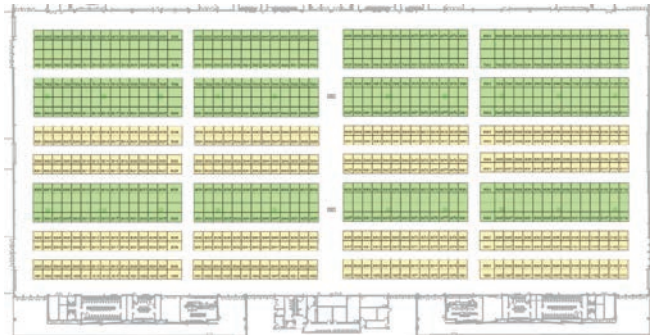
Visit www.OklahomaCityFarmShow.com |

BROADCASTING FROM THE SHOW!



Midwest Shows Inc. | 1-800-873-1411 | www.MidwestShows.com
PEORIA | TULSA | DAKOTA | SIOUX FALLS | HAWKEYE | OKLAHOMA CITY

VISIT THE WEBSITE TO EXPLORE
THE INTERACTIVE FLOOR PLAN!
www.OklahomaCityFarmShow.com



CATTLE HANDLING EQUIPMENT DEMONSTRATIONS

- See the latest equipment put to the test!
- Twice daily
- Win \$500 credit towards cattle chute purchase

~ Supported by



REGISTER AND WIN

\$1000 IN SHOWBUCKS!

Drawing at 1pm daily



WIN

A NEW SPARTAN MOWER!

- Daily test drives
- Drawing on Saturday



FREE COFFEE & ROLLS DAILY UNTIL 10AM

2021 Annual OKC Farm Show Events Schedule

Dates: April 15, 16 & 17, 2021 • Location: Bennett Event Center, Oklahoma City, OK

EVENT	THURSDAY-APRIL 15	FRIDAY-APRIL 16	SATURDAY-APRIL 17
Exhibits — All locations	9 A.M. – 5 P.M.	9 A.M. – 5 P.M.	9 A.M. – 4 P.M.
Producer Appreciation Event — Free Coffee and Rolls Location: Bennett Event Center	9 A.M. – 10 A.M.	9 A.M. – 10 A.M.	9 A.M. – 10 A.M.
\$1,000 Showbucks Drawing <i>*Prize is good for purchasing merchandise/services from show exhibitors only.</i> <i>*Must be present to win</i> <i>*Sponsored by: Great Plains Kubota</i>	Registration before 1 P.M. Drawing at 1 P.M.	Registration before 1 P.M. Drawing at 1 P.M.	Registration before 1 P.M. Drawing at 1 P.M.
Commercial Cattle Grading and Scholarship Awards Competition <i>*Scholarship for Oklahoma youth planning to pursue post secondary ag education in Oklahoma</i> <i>*Sponsors: American Farmers & Ranchers</i>	Winners Announced		
Rusty Rierson —Live Music Performances	Daily at Bennett Center	Daily at Bennett Center	Daily at Bennett Center
Cattle Handling Demonstrations <i>*Sponsors: OKC West and Priefert</i>	10 A.M. & 1:15 P.M.	10 A.M. & 1:15 P.M.	10 A.M. & 1:15 P.M.
Spartan Mower Giveaway <i>*Sponsors: OKC West and Priefert</i>	Test Drive to register at the outdoor test drive area	Test Drive to register at the outdoor test drive area	Drawing 3 P.M.

In the market for a tougher feed bunk?

Lifetime Feed Bunks are the real deal, tough as nails and will last forever.

These feed bunks offer excellent design built with lifetime material and the craftsmanship to ensure a bunk that you will love and brag about to friends and neighbors.

We use heavy 24-, 26- and 30-inch steel pipe, split them in half and grind the edges smooth. Those pipe halves are then saddle cut and welded on 8 and five-eighths inch pipe crosswise for legs that work like skids.

These bunks are truly indestructible and very maneuverable. Simply put, you won't find a more quality bunk at a better price anywhere in the country. These are truly an investment for a lifetime.

For Oklahoma purchasing information contact CPI Pipe and Steel, Inc., 16544 W. Hwy 66, Yukon, OK 73099, at 405-350-8555 or oklahoma@cpipipe.com. For Texas purchasing information, contact CPI Pipe and Steel, Inc., 6256 SW Moody St., Victoria, TX 77905, at 361-485-0991 or texas@cpipipe.com. ♦

Expansion in the Diamond W Corral family

Check out our newest units today.

The new additions to the Diamond W Corral family, manufactured by Burlington Welding, LLC, have just arrived. The rectangular tube unit is our stoutest unit yet, weighing an average of 7,300 pounds. This unit is made out of 3-inch by 2-inch 14-gauge rectangle tubing. Multiple gates add to the ease of movement in and around the unit while working your cattle.

All rectangular tubing corrals have three four-foot walk through gates with spring latches and two divide gates, one 12-foot gate and one 9-foot gate in a 12-foot gate frame. This unit is equipped with lights, a 2-inch ball hitch, and a hitch jack for easy backing and hooking. The dual wheel axle helps ensure a smooth pull of the unit up to highway speeds.

The Diamond W Cattle Box has been designed to work in conjunction with our other Diamond W Corral products by connecting to one of three places on the box. The cattle box measures 8-feet 6-inches wide by 32-feet long with a gooseneck hitch for a total transport length of 48-feet long. All panels and gates are 6-foot tall. Each unit has double

5-foot 6-inch wide rear gates and double 7-foot wide front gates along with two 3-foot wide alleyway gates. Adding to the ease of use are two 4-foot walk through gates. The center divide gate is 12-feet long and is covered with

4 feet of 14-gauge sheet metal. All Diamond W Cattle Boxes are equipped with walking I-Beam suspension, electric brakes, 235x16 radial tires, and transport lights. These products can be set up as quickly and efficiently as our

other corral tubing types, making your cattle handling tasks quick and easy.

Contact us to find your perfect cattle handling fit and start to head out within minutes with our quality Diamond W Portable

Products. Contact Burlington Welding LLC, home of the Diamond W Corral, 1101 Industrial Blvd., Cherokee, OK 73728, call 580-596-3381, visit www.diamondwcorrals.com or email diamondwcorrals@yahoo.com. ♦

Diamond W Corrals
Mfg. by Burlington Welding, LLC

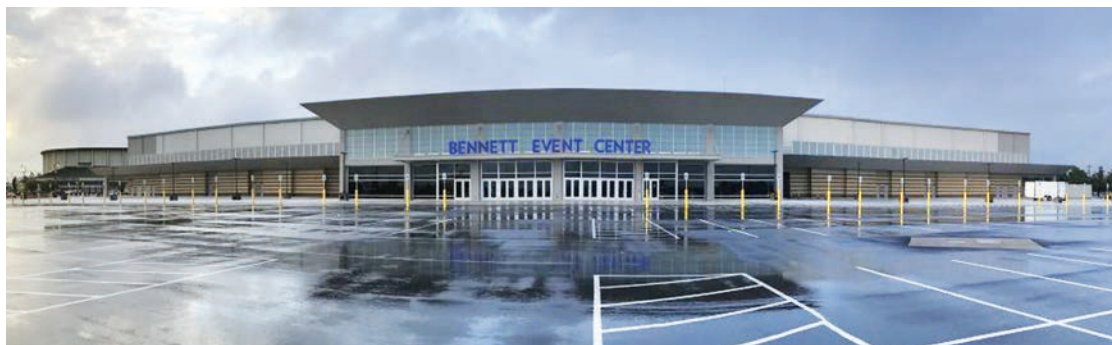
DWC Cattle Box
Patent Pending

Chute & Alleyway
Patent Pending

Call **580-596-3381** or visit www.diamondwcorrals.com

Welcome to the 2021 Oklahoma City Farm Show!

The Oklahoma City Farm Show returns for the 17th year



The 17th Annual Oklahoma City Farm Show is set to feature the latest agricultural machinery, equipment, technology, and services from hundreds of exhibitors representing more than 1,000 products and services. Indoor exhibits will fill the Bennett Event Center along with outdoor exhibits located directly in front of the event center. The show is free to attend and there is plenty of free parking at State Fair Park.

Attendees can stay up to date on the event and view the interactive show floor plan at the event website, OklahomaCityFarmShow.com. The interactive floor plan provides the most up-to-date exhibitor information, along with contact information and exhibit location. Social media users can also stay informed of daily event announcements and interact with fellow attendees and exhibitors by following the show on Facebook at facebook.com/OklahomaCityFarmShow.

Great food, events, music, and prizes

In addition to more than

150,000 square feet of agricultural and ranching exhibits, the show kicks off each morning with complimentary coffee and rolls until 10 a.m. Attendees can also take advantage of the opportunity to sign up for the daily \$1,000 Showbucks prize drawing, sponsored by Great Plains Kubota. The Showbucks drawing will be held each day at 1 p.m. Showbucks can be used as cash to purchase products from show exhibitors. Attendees can sign up for the drawing at the Great Plains Kubota exhibit inside the Bennett Event Center.

Cattle chute demonstrations will be returning to this year's Show and held indoors in the Centennial building daily at 10 a.m. and 1:15p.m. These demonstrations put the latest cattle chutes to the test in side-by-side demonstrations with live cattle. Cattle chutes from ten companies will be featured and demonstrations will be moderated by experienced livestock handlers and industry professionals. The demonstrations are supported by Priefert and OKC

“We are excited to be hosting the 17th Annual Oklahoma City Farm Show in support of the area’s great farm and ranch industry. We are blessed with the state-of-the-art, Bennett Event Center, which provides a clean and comfortable climate-controlled environment.”

—Penny Swank,
Show Manager

West Livestock Market.

Spartan Mowers will be offering a ride and drive demonstration with its zero-turn riding mowers. Attendees who take a test drive on any day of the show will be entered in a drawing to win a new Spartan Zero-Turn mower, given away at 3 p.m. on Saturday. The winner does not need to be present to win.

Returning this year, country singer, Rusty Rierson, will perform daily acoustic shows inside the Bennett Event Center. Rusty is a native of Kansas and has produced eight albums and performed across the country. Rusty

always pays tribute to George Strait, Don Williams, and some of his other heroes, as well as his own music.

“We are excited to be hosting the 17th Annual Oklahoma City Farm Show in support of the areas great farm and ranch industry,” said Show Manager Penny Swank. We are blessed with the state-of-the-art, Bennett Event Center, which provides a clean and comfortable climate-controlled environment. It is a great facility and free admission and plenty of free parking make for an easy and enjoyable experience.”

The Oklahoma City Farm Show runs April 15, 16 and 17 at the Bennett Event Center located on the grounds of Oklahoma’s State Fair Park. Show hours are 9 a.m. to 5 p.m. on Thursday and Friday, and 9 a.m. to 4 p.m. Saturday. State Fair Park is located off NW 10th Street in Oklahoma City, between I-44 and May Avenue. For more information on the Oklahoma City Farm Show, including the most current event schedules, visit OklahomaCityFarmShow.com. ♦

Thank you!

2021 Oklahoma City Farm Show Sponsors & Supporters

- **American Farmers and Ranchers**

Sponsor: Scholarship competition

- **Behlen Country**

Sponsor: Scholarship competition

- **Ddee Haynes**

Volunteer/supporter: Scholarship competition, many hours of hard work to manage, promote, and execute scholarship competition

- **Hilton Garden Inn — OKC Airport**

Partner: Host Hotel

- **Great Plains Kubota**

Sponsor: Daily \$1,000 Showbucks drawing

- **Oklahoma Career Tech Agriculture Education Division**

Sponsor: Scholarship competition, registration and scoring

- **Oklahoma Dept. of Agriculture Food and Forestry**

Sponsor: Scholarship competition, Orientation and Grading seminar

- **Oklahoma State University 4-H Extension**

Sponsor: Scholarship competition, registration and scoring

- **OKC West Livestock Market**

Sponsor: Scholarship competition, competition venue and cattle provider
Sponsor: Scholarship competition, Rick Jones \$2,000 Memorial Scholarship endowment

- **Priefert**

Sponsor: Scholarship competition, supplier of chute as prize for top team
Sponsor: Cattle Handling Equipment demonstration, provider of equipment and support

- **Spartan Mowers**

Sponsor: Spartan mower test drive and prize drawing

Tough enough for bison—tough enough for cattle

We met up with Brock Toler with Back Forty Bison and asked him a few questions about the effectiveness of the Lewis Cattle Oilers.

Toler is the ranch manager of Back Forty Bison near Dadeville, Missouri.

He was skeptical at first on the durability of the oilers.

“Bison are notorious for tearing things up, flipping things over. To bison, everything is a toy,” he said. “To this date, they haven’t tipped one (Lewis Cattle Oiler) over. The durability has really been surprising.”

The biggest thing that Toler loves about the oiler is the efficiency.

“They are so efficient. With the fact that they are not gravity fed, I’m not losing a bunch

of product on the ground. The pump administers only the amount that needs to be put out on the animal. We use mineral oil with a permethrin-based product. When you are dealing with mineral oil, the cost is definitely a factor. With the Lewis Cattle Oiler, there is not waste. I can fill up the 8-gallon tank on the oiler and it will last all summer long with the bison scratching on it all the time.”

Toler says that they don’t deal with lice as much in their area. Flies are a huge problem though.

When asked about fly control, Toler answered, “You can’t just go up and spray bison like you do cattle. It has to be a remote way of treatment. With the self-sustaining oiler, bison instinctively go directly to the diagonal cross piece on the oiler. Bison love

“With the Lewis Cattle Oiler, there is no waste. I can fill up the 8 gallon tank, on the oiler, and it will last all summer long—with the bison scratching on it all the time!”

— Brock Toler,
Back Forty Bison

diagonal pieces, whether it be a branch or a power line. They are driven to it to rub and scratch on. This design is right up the alley on the bison’s thought process.”

Toler says the oiler has become a favorite of his animals.

“After a while, the bison will deliberately go up to the face flap and just put their faces on the piece. It’s interesting to see them go

directly up to the piece and rub their eyes.”

People may say our oilers are expensive. Toler looks at it like this, “At the end of the day the cost of the oiler is a calf without pinkeye. It pays itself off in one year in our industry.”

If you ask Toler his thoughts on the oiler, he will tell you, “I am a true believer of the product!” ♦

From the Rawhide family to yours

John McDonald knows a thing or two about livestock equipment. Years spent hauling a portable arena across America for televised bull riding events allowed him to put his experience and knowledge to the test when it came to portable corrals. His family will joke about not being able to throw away anything he had notes on, because that item could just hold the prototype idea or drawing for his next big design.

In 2002, John and his family relocated to Abilene, Kansas, to fulfill his dream of designing a portable corral that would be easier than the other systems on the market. After working with multiple prototypes and cattle producers in the local area, John finally introduced his original Rawhide Portable Corral design to the public at a farm show in Kansas. It could be set up by one person without any lifting and it could be done quickly; yet it could also be pulled down the road at highway speeds, ensuring that no time would be wasted while catching cattle.

Over the years he made changes to the system; some at the request of customers and others just so that it would work better for the producers. The best change he will tell you is the electric over hydraulic lift for every jack on the system. John’s design was the first portable corral on the market to offer the hydraulic lift option.

After selling his original design for five years or so, he envisioned an even better design. In answer to this he developed the Processor, which offers the same concept of pen configurations as his old design but he was able to make the transport wheels permanent on the system and a manual adjustable alley is standard on every model. Most customers note the obvious difference is that it’s the gooseneck model of the portable corral. The Processor continues to be the most popular model and is offered in three sizes for the convenience of ranchers and cattle producers

throughout the world.

The main feature with this design is the ability to customize the corral upon ordering by including a hydraulic alley, head gate or loading chute. Any combination of options is available on a Processor. The design of the Processor continues to impress cattle producers with its versatility and ease of use.

The permanent sheeted adjustable alley aids with working your livestock, whether it is done on site or in the field. The adjustable alley can be sized from 30 inches down to 16 inches; either manually or hydraulically. In 2016 John decided to build his older design again; only this time it had one major change. The transport wheels are now permanent.

The Rawhide Original is still a bumper pull model because it is not as heavy as the Processor, but other than that the new update is pretty much the same. The Original comes in only two sizes, standard and large, and does not have the capability of options.

When each customer picks up their system they will receive a demonstration. Also with each

purchase of a corral the customer receives a diagram of the unit, a bird-eye view so to speak, showing how the panels are configured. The most important part is that it shows how the panels fold up. Every panel on a Rawhide Portable Corral has a solid rubber wheel positioned in a specific location so that when folded up the panels will all fold flush against the others. This ensures that the system is road-width legal and is not considered oversized.


John and Mary McDonald run the family business out of their manufacturing plant in Abilene, Kansas. They proudly employ thirty employees from around the area and John emphasizes quality work to every one of them.

If any customer has a concern or an issue, they can simply call Rawhide and someone will help them out. Two of their three children work at the plant with them, truly making the business a small family affair. When calling in to get information about a unit you will most likely talk to Mary or Ethan McDonald, son, about the corrals; Cassy Wilson, daughter, handles

accounts receivables, accounts payable, marketing and human resources side of the business.

For more information about Rawhide Portable Corral’s and to

view product videos visit the Rawhide website www.rawhideportablecorral.com or find them on Facebook. To visit with someone in person, call 785-263-3436. ♦



The First Hydraulic Corral and still the Largest!


Rawhide Processor

by John McDonald

1 Person

No Lifting

10 Minutes



Rawhide Portable Corral

785.263.3436 • rawhideportablecorral.com









Saws 3-PT & SKID

Tree cutters and mulchers

Call or email to set a demo up today!



Call Price Bros. for Local Dealer:

(316) 265-9577

www.pricebroseq.com/shop

SEE US AT THE OKLAHOMA FARM SHOW

GrassWorks Weed Wiper kills weeds, saves legumes and is the economical, easy and efficient application for weed management



GrassWorks Weed Wiper, the ultimate weed control system, eliminates any drift and drip concerns onto your legumes, grasses or crops. This roll-on paint brush application provides the following:

- Costs pennies per acre in chemical use;
- Quick and easy to apply;
- Can be used even with windy conditions;
- Eliminates the worry of drift problems; and
- Kills only the weeds, not your crop, allowing no drift and no drip.

The GrassWorks Weed Wiper weed control system will work and be totally different from any other contact applicator due to the rotating steel drum. As it is driven it turns in the opposite direction that the GrassWorks Weed Wiper is traveling, so you get a good wiping action on the plants that you are trying to get rid of. This rotating action does several things.

First, it allows us to run the carpet material

very saturated and therefore have a lot of chemical available to apply to the targeted weeds. Because it is rotating, it eliminates the drip.

Second, it is applying the chemical to the bottom or underside of the leaves and stems, allowing plant kill to be easier because of greater porosity. This is applying the chemicals to the weakest part of the weed.

Third, with the adjustable height we are only putting the chemicals on the targeted weeds and not wasting chemicals on grasses and clovers that we want to keep. Adjustable height ranges from zero inches to 5 feet.

We manufacture pull type and tractor mount units from 3' to 50'. Many successful applications are being used for hay and pasture, perennial peanuts, food plots, peanuts, sod farms, fruit orchards, etc.

For more information, call us at 888-80-WIPER or visit our website at www.weedproblems.com.

We build and farm with American pride. ♦

HydraBed announces the Hydra STX


HydraBed is proud to announce the launch of the first and only proportional electric control in the bale bed industry, the Hydra STX, a dash mounted joystick and optional wireless joystick that provide variable speed for all HydraBed functions.

Hydra STX gives the user precise variable speed control at their fingertips. This is the only variable speed electric control on the market. For convenience, the optional wireless remote has a self-contained LED flashlight and uses a rechargeable lithium battery that plugs into a standard USB port.

Thorough testing has been done on the Hydra STX system, both in a controlled environment and in the field. Several Hydra STX systems have been operating in the field since early 2020, across several states, and continue operating today. Extended cycle testing of the Hydra STX servos was performed by reaching 100,000 bale-loading cycles—1,000 bales a year for 100 years. The test was done running 3 weeks consecutively, operating 24 hours a day, 7 days a week without pause.


The Hydra STX system has been designed in a way that any mid-2002 or newer HydraBed can be easily retrofitted. A unique electric latching feature has been designed to provide constant live auxiliary hydraulics to operate machinery containing its own control valve, such as a hydraulic squeeze chute or wire winder. Electric latching feature only available for beds with the optional third valve section.



Call 800-530-5624 today for pricing options. ♦



HYDRABED
PO Box 248 / 902 Hwy 246,
Sabetha, KS 66534
800-530-5624

**A new day is dawning
with our revolutionary
new Hydra STX controls**
ONLY VARIABLE SPEED ELECTRIC CONTROL
IN THE BALE BED MARKET



CALL OR CHECK OUR WEBSITE FOR MORE DETAILS
www.hydrabeds.com


KILL WEEDS
FOR LESS THAN A DOLLAR PER ACRE

**Weed Management for Row Crops,
Hay and Pasture**

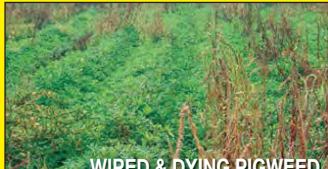
Eliminates Pigweed, Johnsongrass, Lovegrass, Thistles
Ragweed And Any Other Noxious Weeds.

NO DRIP • NO DRIFT


GrassWorks Weed Wiper™
The Rotating Weed Wiper That Works!
“The Fast, Efficient and Economical Way”




WIPED & DYING JOHNSONGRASS




WIPED & DYING PIGWEED



SUCCESSFUL RESULTS WIPING
LOVEGRASS




3 PT TRACTOR MOUNT 6' TO 50'



TOW BEHIND UNITS UP TO 15'

**“The Proven Tool
for Weed Control”**

- Pennies per acre
- Can be applied in windy conditions
- No drip, no drift
- Roll on paint brush application



**GrassWorks
MANUFACTURING**

888-80-WIPER • 479-790-1091
WWW.WEEDPROBLEMS.COM
MFG. IN USA

2021 Oklahoma City Farm Show



April 15, 16, 17, 2021
Outdoor Exhibits
OKLAHOMA CITY
Farm Show

ENTRANCE

900	901	902	903	904	905	906	907	908	909
-----	-----	-----	-----	-----	-----	-----	-----	-----	-----

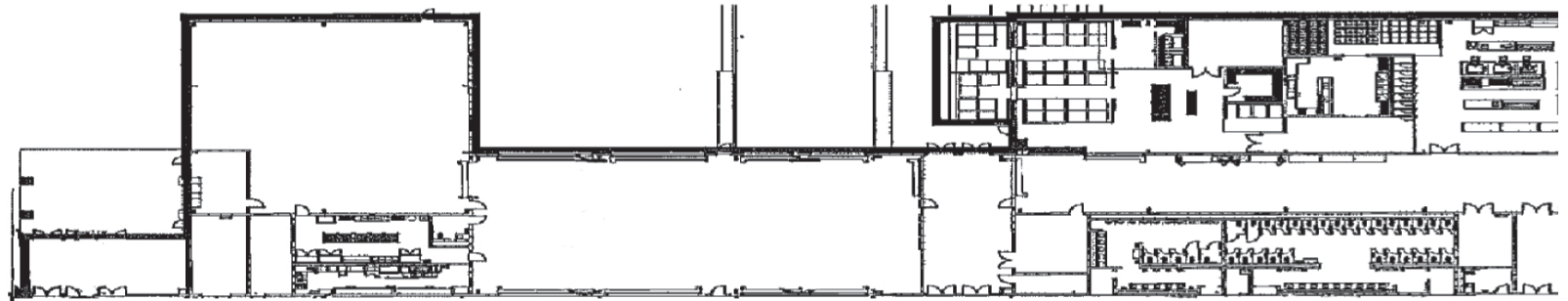
910	911	912	913	914	915	916	917	918	919
-----	-----	-----	-----	-----	-----	-----	-----	-----	-----

1901	1900	1801	1800	1701	1700	1601	1600	1501	1500	1401	1400	1301	1300	1201	1200	1101	1100
1803	1902	1803	1802	1703	1702	1603	1602	1503	1502	1403	1402	1303	1302	1203	1202	1103	1102
1905	1904	1805	1804	1705	1704	1605	1604	1505	1504	1405	1404	1305	1304	1205	1204	1105	1104
1907	1906	1807	1806	1707	1706	1607	1606	1507	1506	1407	1406	1307	1306	1207	1206	1107	1106
1909	1908	1809	1808	1709	1708	1609	1608	1509	1508	1409	1408	1309	1308	1209	1208	1109	1108
1911	1910	1811	1810	1711	1710	1611	1610	1511	1510	1411	1410	1301	1310	1213	1210	1111	1110

Bennett Events Center
State Fair Park, 3101 Gordon Cooper Blvd, Oklahoma City, OK

2021 Oklahoma City Farm Show

Indoor Map



700	8000	8002	8004	8006	8008	8010	8012	8014	8016	8018	8020	8022	8024	8026	8028	8030	8032	8034	8036	8038	8040	8042	8044	8046	8048	8050	8052	8054
	A8000	A8002	A8004	A8006	A8008	A8010	A8012	A8014	A8016	A8018	A8020	A8022	A8024	A8026	A8028	A8030	A8032	A8034	A8036	A8038	A8040	A8042	A8044	A8046	A8048	A8050	A8052	A8054
	A7001	A7003	A7005	A7007	A7009	A7011	A7013	A7015	A7017	A7019	A7021	A7023	A7025	A7027	A7029	A7031	A7033	A7035	A7037	A7039	A7041	A7043	A7045	A7047	A7049	A7051	A7053	A7055
	7001	7003	7005	7007	7009	7011	7013	7015	7017	7019	7021	7023	7025	7027	7029	7031	7033	7035	7037	7039	7041	7043	7045	7047	7049	7051	7053	7055
	7000	7002	7004	7006	7008	7010	7012	7014	7016	7018	7020	7022	7024	7026	7028	7030	7032	7034	7036	7038	7040	7042	7044	7046	7048	7050	7052	7054
	A7000	A7002	A7004	A7006	A7008	A7010	A7012	A7014	A7016	A7018	A7020	A7022	A7024	A7026	A7028	A7030	A7032	A7034	A7036	A7038	A7040	A7042	A7044	A7046	A7048	A7050	A7052	7054
	A6001	A6003	A6005	A6007	A6009	A6011	A6013	A6015	A6017	A6019	A6021	A6023	A6025	A6027	A6029	A6031	A6033	A6035	A6037	A6039	A6041	A6043	A6045	A6047	A6049	A6051	A6053	6055
	6001	6003	6005	6007	6009	6011	6013	6015	6017	6019	6021	6023	6025	6027	6029	6031	6033	6035	6037	6039	6041	6043	6045	6047	6049	6051	6053	6055
	6000	6002	6004	6006	6008	6010	6012	6014	6016	6018	6020	6022	6024	6026	6028	6030	6032	6034	6036	6038	6040	6042	6044	6046	6048	6050	6052	6054
	5001	5003	5005	5007	5009	5011	5013	5015	5017	5019	5021	5023	5025	5027	5029	5031	5033	5035	5037	5039	5041	5043	5045	5047	5049	5051	5053	5055
	5000	5002	5004	5006	5008	5010	5012	5014	5016	5018	5020	5022	5024	5026	5028	5030	5032	5034	5036	5038	5040	5042	5044	5046	5048	5050	5052	5054
	4001	4003	4005	4007	4009	4011	4013	4015	4017	4019	4021	4023	4025	4027	4029	4031	4033	4035	4037	4039	4041	4043	4045	4047	4049	4051	4053	4055
706	4000	4002	4004	4006	4008	4010	4012	4014	4016	4018	4020	4022	4024	4026	4028	4030	4032	4034	4036	4038	4040	4042	4044	4046	4048	4050	4052	4054
707	A4000	A4002	A4004	A4006	A4008	A4010	A4012	A4014	A4016	A4018	A4020	A4022	A4024	A4026	A4028	A4031	A4033	A4035	A4037	A4039	A4041	A4043	A4045	A4047	A4049	A4051	A4053	A4055
708	A3001	A3003	A3005	A3007	A3009	A3011	A3013	A3015	A3017	A3019	A3021	A3023	A3025	A3027	A3029	A3031	A3033	A3035	A3037	A3039	A3041	A3043	A3045	A3047	A3049	A3051	A3053	A3055
709	3001	3003	3005	3007	3009	3011	3013	3015	3017	3019	3021	3023	3025	3027	3029	3031	3033	3035	3037	3039	3041	3043	3045	3047	3049	3051	3053	3055
710	3000	3002	3004	3006	3008	3010	3012	3014	3016	3018	3020	3022	3024	3026	3028	3030	3032	3034	3036	3038	3040	3042	3044	3046	3048	3050	3052	3054
711	2001	2003	2005	2007	2009	2011	2013	2015	2017	2019	2021	2023	2025	2027	2029	2031	2033	2035	2037	2039	2041	2043	2045	2047	2049	2051	2053	2055
712	2000	2002	2004	2006	2008	2010	2012	2014	2016	2018	2020	2022	2024	2026	2028	2030	2032	2034	2036	2038	2040	2042	2044	2046	2048	2050	2052	2054
	1001	1003	1005	1007	1009	1011	1013	1015	1017	1019	1021	1023	1025	1027	1029	1031	1033	1035	1037	1039	1041	1043	1045	1047	1049	1051	1053	1055

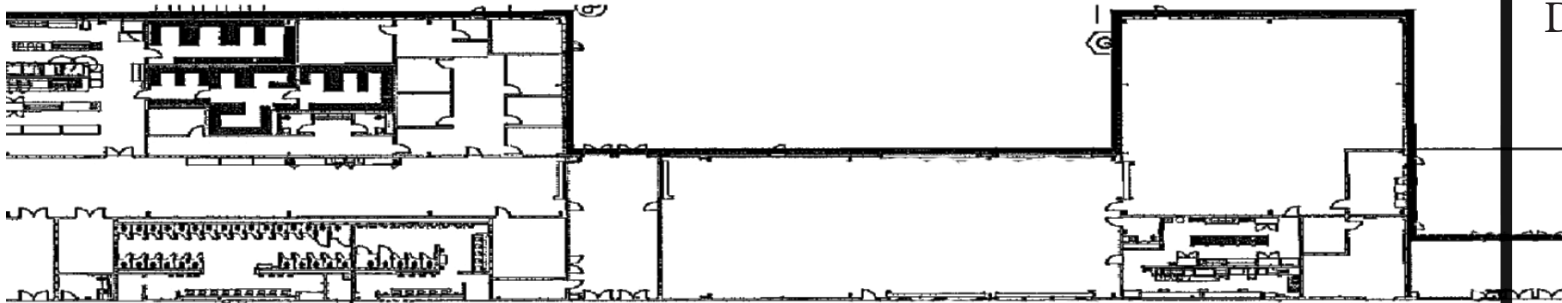


Bennett Events Center
State Fair Park,
3101 Gordon Cooper Blvd,
Oklahoma City, OK

MAIN EN
↓ outdoor

April 15, 16, 17, 2021

Walkway to
Livestock
Demonstrations



8056	8058	8060	8062	8064	8066	8068	8070	8072	8074	8076	8078	8080
A8056	A8058	A8060	A8062	A8064	A8066	A8068	A8070	A8072	A8074	A8076	A8078	A8080
A7057	A7059	A7061	A7063	A7065	A7067	A7069	A7071	A7073	A7075	A7077	A7079	A7081
7057	7059	7061	7063	7065	7067	7069	7071	7073	7075	7077	7079	7081

8082	8084	8086	8088	8090	8092	8094	8096	8098	8100	8102	8104	8106	8108	8110
A8082	A8084	A8086	A8088	A8090	A8092	A8094	A8096	A8098	A8100	A8102	A8104	A8106	A8108	A8110
A7083	A7085	7087	A7089	A7091	A7093	A7095	A7097	A7099	A7101	A7103	A7105	A7107	A7109	A7111
7083	7085	7087	7089	7091	7093	7095	7097	7099	7101	7103	7105	7107	7109	7111

7056	7058	7060	7062	7064	7066	7068	7070	7072	7074	7076	7078	7080
A7056	A7058	A7060	A7062	A7064	A7066	A7068	A7070	A7072	A7074	A7076	A7078	A7080
A6057	A6059	A6061	A6063	A6065	A6067	A6069	A6071	A6073	A6075	A6077	A6079	A6081
6057	6059	6061	6063	6065	6067	6069	6071	6073	6075	6077	6079	6081

7082	7084	7086	7088	7090	7092	7094	7096	7098	7100	7102	7104	7106	7108	7110
A7082	A7084	A7086	A7088	A7090	A7092	A7094	A7096	A7098	A7100	A7102	A7104	A7106	A7108	A7110
A6083	A6085	A6087	A6089	A6091	A6093	A6095	A6097	A6099	A6101	A6103	A6105	A6107	A6109	A6111
6083	6085	6087	6089	6091	6093	6095	6097	6099	6101	6103	6105	6107	6109	6111

6056	6058	6060	6062	6064	6066	6068	6070	6072	6074	6076	6078	6080
5057	5059	5061	5063	5065	5067	5069	5071	5073	5075	5077	5079	5081

6082	6084	6086	6088	6090	6092	6094	6096	6098	6100	6102	6104	6106	6108	6110
5083	5085	5087	5089	5091	5093	5095	5097	5099	5101	5103	5105	5107	5109	5111

5056	5058	5060	5062	5064	5066	5068	5070	5072	5074	5076	5078	5080
4057	4059	4061	4063	4065	4067	4069	4071	4073	4075	4077	4079	4081

5082	5084	5086	5088	5090	5092	5094	5096	5098	5100	5102	5104	5106	5108	5110
4083	4085	4087	4089	4091	4093	4095	4097	4099	4101	4103	4105	4107	4109	4111

4056	4058	4060	4062	4064	4066	4068	4070	4072	4074	4076	4078	4080
A4057	A4059	A4061	A4063	A4065	A4067	A4069	A4071	A4073	A4075	A4077	A4079	A4081
A3057	A3059	A3061	A3063	A3065	A3067	A3069	A3071	A3073	A3075	A3077	A3079	A3081
3057	3059	3061	3063	3065	3067	3069	3071	3073	3075	3077	3079	3081

4082	4084	4086	4088	4090	4092	4094	4096	4098	4100	4102	4104	4106	4108	4110
A4083	A4085	A4087	A4089	A4091	A4093	A4095	A4097	A4099	A4101	A4103	A4105	A4107	A4109	A4111
A3083	A3085	A3087	A3089	A3091	A3093	A3095	A3097	A3099	A3101	A3103	A3105	A3107	A3109	A3111
3083	3085	3087	3089	3091	3093	3095	3097	3099	3101	3103	3105	3107	3109	3111

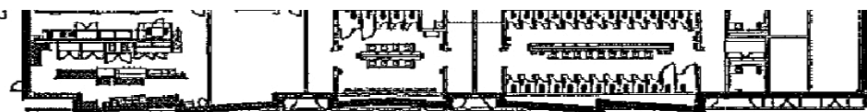
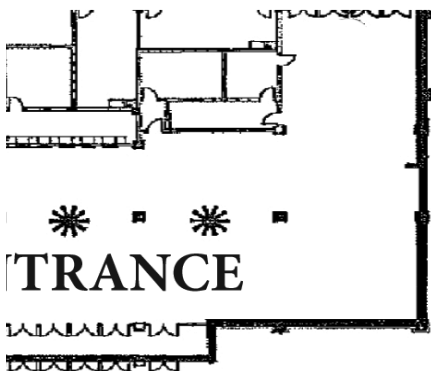
3056	3058	3060	3062	3064	3066	3068	3070	3072	3074	3076	3078	3080
2057	2059	2061	2063	2065	2067	2069	2071	2073	2075	2077	2079	2081

3082	3084	3086	3088	3090	3092	3094	3096	3098	3100	3102	3104	3106	3108	3110
2083	2085	2087	2089	2091	2093	2095	2097	2099	2101	2103	2105	2107	2109	2111

2056	2058	2060	2062	2064	2066	2068	2070	2072	2074	2076	2078	2080
1057	1059	1061	1063	1065	1067	1069	1071	1073	1075	1077	1079	1081

2082	2084	2086	2088	2090	2092	2094	2096	2098	2100	2102	2104	2106	2108	2110
1083	1085	1087	1089	1091	1093	1095	1097	1099	1101	1103	1105	1107	1109	1111

- 800
- 801
- 802
- 803
- 804
- 805
- 806
- 807
- 808
- 809
- 810



Exhibits ↓

SHOW HOURS } THURSDAY & FRIDAY: 9 A.M. - 5 P.M. / SATURDAY: 9 A.M. - 4 P.M.

www.OklahomaCityFarmShow.com
Free Admission! Free Parking!

2021 Exhibitor Booth Listing

3C Cattle Feeders.....0809-0814
 A&M Feeds.....4053-4055
 Ace Harvest4095
 ACG MaterialsNA
 Advanced
 Body Scan.....6052-6054
 Advantage Ag.....1063-2066
 AFR/OFU
 Cooperative.....4082-A4088
 Ag Risk Management and
 Insurance LLC.....5026-5028
 Ag Rite.....3044-3046
 Agridyne, LLC.....2085
 Agri-Inject.....5087
 AgRisk Advisors4089
 AgriSompo
 North America6086-6088
 Agroecopower LLC.....5018
 Air Seeder Services6068
 Allied Powers LLC6100
 Alternative Construction
 Parts Inc.....3028
 AM Machinery Inc2101-2103
 American Farmers &
 Ranchers5043-5045
 Americot, Inc.2041-2043
 Apache Mfg - Global
 Equipment Co. Inc.....1300
 Arrow Cattle
 Equipment.....7039-8044
 Autumn Exteriors.....6018
 B & W Farm & Ranch
 Equipment.....NA
 Bad Dog Tools.....4083
 Bale Tuff.....3044-3046
 Bartlett CO-OP
 Association1501-1602
 Behlen Country1703-1802
 Bestway.....6073-A7080
 Bissell Commercial715-716
 Blattner Feedlot
 Construction.....1701-1800
 Bobcat of Oklahoma
 City.....7083-A8088
 Bohlmann, Inc.1400
 Borgil Enterprises.....5044-5046
 Bradford Buildings.....6056-6058
 Bramco, Inc.1001-2000
 Brandt Augers6065-7068
 Brashear Concrete Feeders &
 Rubber Water Tanks.0803-0804
 Breezy Mills of
 Iowa LLC7016-A7016
 Briscoe Sales4081
 Brute Cattle Equipment - Dodge
 Manufacturing.....5108-5110
 Burlington
 Welding LLC.....6082-6084
 Butler Beds.....1073-2074
 C Bar W6031-6033
 C5 MFG, LLC1035-2038
 Callicrate Banders5086
 Camrock.....6006-6008
 Cattleac Cattle
 Equipment Co.....1043-2044
 CBI Pipe & Supply Inc.3022
 Central-Halliburton
 Comm. Co.....4035
 Century Bale Feeders.4027-4029
 Circle M Trailers.....7098-A7104
 Cobett Company5003
 CSTK4069-4071
 CT Brothers LLC.....4081
 Culbac Hay4059-4061
 Custom
 Flashlights-USA0800-0801
 Denning Machine
 Shop, Inc.0908-0909
 DewEze Mfg1077-2080

Diamond W Corral...6082-6084
 Dixie Chopper1401-1504
 Dooley's Water
 & Energy.....5073-5075
 Dougherty Forestry
 Manufacturing.....7047-A8054
 Dusty Road
 Leather Co.....3030-3032
 Eagle Plastic / AmeriAg Co.. 5001
 Eco Water.....6012-6014
 EGE Products.....4021
 Elegance by Scentsy3013
 Energy Curve
 Technology.....5021-5023
 Entz & Associates5098
 Euroshine USA, Inc.6050
 Express Scale Services.5031-5033
 EZE-LATCH2031
 Farm Source LLC5107-5111
 Fellowship of Christian Farmers,
 International.....5068-5070
 Fendt3057-4060
 Ferguson Roof
 Systems.....3016-3018
 Filson Manufacturing
 Co., Inc.....0910
 Firestone Farm Tires..6000-6002
 First Choice
 Building Services.....2039
 Flagpoles by
 Uncommon USA, Inc.3054
 Foot Pharmacy Direct4093
 Forage Built Better1019-2020
 Gallagher.....4047-4051
 German Roofing &
 Distributing.....2091-2093
 Giant Rubber
 Water Tanks.....6062-6064
 GMLS Industries, Inc.4057
 Golden Fox Buildings.....4057
 Golden Grain Bins4057
 Grasshopper- KDI.....7027-8028
 GrassWorks
 Mfg. LLC.....2025-2029
 Great Plains Kubota..6083-A7094
 Greene Builds, Inc.....5077
 Growers Source, LLC.4015-4017
 GWS Green's Welding
 & Sales.....4105-4107
 Haring
 Multi-Trailer LLC...0709-0712
 Hawaiian Moon.....3102

Health & Beauty
 Connections, LLC.....6044
 Heavybilt Mfg.3071-A4080
 Hem Inc.4019
 Herd Finder LLC.....5019
 Herrs Machine
 Hydrostatics5062
 Hesston.....3057-4060
 High Plains Journal.....6111
 Honing by Hardy.....2001
 2001.....2001
 Horizon Products /
 Zerk Zapper.....5057
 HosWel Flatbed1019-2020
 Hotsy of
 Oklahoma, Inc.1053-2054
 Husquvarna Mowers.....1401
 1401.....1504
 HydaBed.....1057-2060
 Hydra Feeder.....1057-2060
 Hydrostatic
 Transmissions5062
 Indigo Agriculture.....5036
 Industrial Lubrication
 Systems, LLC.....5017
 Iron Wolf /
 Tri State Supply.....3104-3110
 Jager Pro Hog
 Control Systems911
 JB Pipe LLC1203-1302
 John Deere4000-4010
 John Deere
 Equipment.....6057-7060
 Johnston Seed Company....5083
 Jones Twine &
 Net Wrap Inc.....3044-3046
 Kaput Products3040
 Ken Carpenter Auction
 & Realty.....3088
 Kerndt Livestock Products..3052
 KFS Farm Supply.....4027-4029
 KG Wholesale LLC6022
 Kinetico Water5073-5075
 Knutson Irrigation
 Design, LLC2057-2061
 Kraft Tank
 Corporation.....0700-0704
 Kretchmar
 Distributing, Inc..7027-A8028
 Ktec Scrapper4000-4010
 Kuhns Mfg. LLC.....2106-A2110
 Lankota.....1095-2098

Lee Unlimited, Inc.....5053-5055
 Legacy Steel
 Buildings.....3101-A3103
 Lewis Cattle Oiler.....2035-2037
 Lindsay Irrigation
 Solutions2079-2081
 Linn Post
 & Pipe, Inc.1303-1404
 LipSense/Senegence.....5071
 Livingston Machinery
 Company3057-A4060
 Lowe Equipment
 Attachments2063-2065
 LS Tractors.....1401-1504
 M & E Sales5097
 Martin Planting
 Attachments1031-2032
 Martin Till6070-6074
 Matsen Minature
 Farms.....6078-6080
 May Wes Poly Products..1031-2032
 MDS Manufacturing
 Co., Inc.1083-2086
 Meg-Mo Systems.....5081
 Metal Sawdust
 42, LLC.....5037-5039

Meyer Manufacturing
 Corporation.....7077-A7081
 Midcontinent Livestock
 Supplements.....5022
 Midwest Energy Ionics.....3010
 Midwest Exterior
 Products.....5049
 Miller Gate Openers5054
 Minnesota Pneumatic
 Products.....5025-6028
 MLS Tubs.....5022
 Mobile Marketing Solutions, Inc.
 dba Brewco
 Marketing Group ..7031-A8034
 Moly Mfg., LLC /
 Silencer.....6001-A6007
 Montezuma
 Toolbox's1031-2032
 Moore Water Treatment.....6016
 Multimin USA, Inc.5013
 My Pillow, Inc.5042
 National Livestock.....4085-4087
 National Livestock
 Commission.....4085-4087

Continued on 18

GREEN'S WELDING & SALES



10' FEED BUNK

Portable Working Alleys
 Portable Panels • Creep Feeders
 Portable Bulk Bins 1 & 3 Ton
 Bulk Feed Bins 1, 3 & 5 Ton
 10' Steel Feed Bunks



3 TON PORTABLE BULK FEED BIN



See us at the Oklahoma City Farm Show
 Booths: 4105-4107

LIVESTOCK HANDLING &
 FEEDING EQUIPMENT

Appleton City, MO • 660-476-5598
 www.greenswelding.com

- Low/no traffic - OK
- No heat - OK
- No concrete - OK
- Bull-tough
- Buried system
- Open drinking area
- Easy plumbing access
- Bison, Cattle, Horses, Sheep

Made in USA since 1997

www.cobett.com • 888-699-4722

2021 Exhibitor Booth Listing

Continued from 17

Nature's Lounger..... 6022	Precision Planting Clean Sweep Systems..... 1031-2032	Rowse Hydraulic Rakes..... 3063-A4066	Storage Equipment and Container..... 1509-1511	Triple G Coatings, Inc. 3056
Nelson Sprinklers 5009	Price Bros. Equipment Co..... 6051-A7054	Rush-Co Livestock Shade Systems..... 4005-4007	STOR-LOC..... 5093-5095	Turbo Diesel of Oklahoma.. 5080
New-Aire Fireplace Systems & Wood Fire Ovens 5089-5091	Pride Of The Farm..... 5059-5061	S. I. Precast..... 5030-5032	Sunrise Lawn Furniture..... 4109-4111	Urad Leather Conditioner.. 4063
Notch Manufacturing, Inc. 7105-A8110	Priefert Rodeo & Ranch Equipment..... 7091-A8096	S.I. Distributing, Inc. 1031-2032	Super Duty Fans 706-707	US Fleet Tracking 5050
NutraDrip Irrigation Systems..... 3036	Prime Attachments .. 7000-A7006	Schaeffer's Specialized Lubricants 2073-2075	Superior Grain Bins ... 6065-7068	Valle Bros. Mfg..... 1505-3060
Off Grid Enterprises, LLC .. 4067	Pritchett Twine & Netwrap..... 4059-4061	Scimetrics Limited Corp..... 3040	Superior Sleep Experience 3066-3070	Venture Equipment..... 3082
OKC Tarp & Supply..... 3006	Purple Wave Auction..... 2047	Scramblers 2, LLC dba "The Flashlight People" 2051	Superior Steel Sales, LLC 1611-1710	Vermeer Corporation..... 6037-A7042
Oklahoma AgCredit .. 2087-2089	Quality Craft Tools..... 2053-2055	Seal Smart 3084	Sure Crop 5082-5084	Vesta Foundation Solutions 6094-6096
Oklahoma Beef Council..... 5105	Quality Liquid Feeds, Inc. 4043-4045	Senninger Sprinklers..... 5009	Swanson Ag Wraps 2083	Veto Heaters 5074-5078
Oklahoma Cattlemen's Association 5102	Radio Oklahoma Network 0806	Shawnee Milling Company 6030	T & W Tire 6000-6002	Vision Works Camera.. 1031-2032
Oklahoma Farm Bureau 4097-4099	Ranch Hand Wire Wizard..... 5060	Shoup Manufacturing Company 4001-4003	Texanna Belles..... 5104-5106	Vitalix, Inc..... 5101-5103
Oklahoma Independent Stock Growers..... 5094	Rawhide Portable Corral, Inc. 1407-1510	Shur-co Tarps..... 3006	Texas and Southwestern Cattle Raisers Association .. 5064-5066	Walinga USA Inc..... 1089-2092
Oklahoma National Stockyards..... 5096	Real Tuff..... 4027-4029	Skeeters Market..... 2007-2009	The Big Rack Shack ... 1047-2050	Wall Bin Hoppers, LLC 6065-7068
Oklahoma Steel & Wire Co, Inc..... 5008-5010	Redfern Ent., Inc..... 3001-3005	Sooner Scale, Inc 5056	The Original Bucket Stool 5004	Wall Equipment, LLC.... 6065-7068
Operation 320 LLC..... 5060	Renewal by Andersen..... 6104	Southern Hog Control 911	Thompson Diesel 4011	Warner Brothers Seed Company 4031
P & C Cattle Pens 1311-1410	Renshaw Farms Netwrap/BBE 1019-2020	Southwest Center Pivots 5009	Tiger Jaw 2011-2013	Warren Cat 7030-A7034
P & K Equipment, Inc/John Deere..... 6057-A7060	Reproduction Enterprises, Inc..... 3078-3080	Southwest Distributing Co..... 7057-A8066	Tigerco Distributing Company 4108-A4110	Western Livestock Commission Company 0805
Piusi USA..... 4025	Ridley Block Operations..... 3083	Southwest Fabricators, Inc.. 2021	Titan Trailer Sales..... 1209-1310	Wick Buildings..... 4103
Pneu-Dart, Inc. 2095-2097	Ritchie Drinkers 4027-4029	Spartan/Intimidator.. 3025-A4028	Titan West Cattle Equipment..... 1209-1211	Wingfield Dist. Co.... 3107-A3111
Power Post Driver 5000	Rivers Edge Enterprises, LLC..... 5004	Staffett USA Ltd..... 2011-2013	T-L Irrigation Co..... 4039	Wireless Sourcing..... 6110
Prairie Grain Analyzers, Inc... 5058	RK&R Dozer Service, LLC..... 4000-A4010	Statite 50 San Antonio Steel Company 2069	T-L Irrigation Co..... 5009	Woodward Livestock Auction..... 5012
Prairie Phoenix Cattle Systems..... 5088-5090	Roth Tank 6006-6008	Stillwater Milling Co / Arrow Cattle Equipment .. 7039-A8044	TNR Group 5065-5067	Wright Tractors, LLC.. 1401-1504
	Round Bale Solutions.. 1013-2016	Stillwater Milling Company 4053-4055	Toro Mowers 1401-1504	W-W Livestock Systems..... 1025-2028
		Stinger, Inc 6032	Tractor Bob..... 6021-7020	Yanmar America Corporation..... 6023-A7028
			Travis Scale Co..... 5063	Zimmatic by Lindsay..... 2079-2081 ♦
			Triple C Manufacturing, Inc. 1057-2060	

GWS continues to provide quality products

Green's Welding and Sales of Appleton City, Missouri, continues to strive to serve their customers by providing quality products at reasonable prices. As things have changed over the last 37 years at GWS, quality, integrity, and passion have remained the same. GWS continues to design products to help improve efficiency on the farm. They work to meet current needs

of their valued customers. GWS bulk-feed bins are currently the hottest item in the sales line.

GWS bulk bins allow for convenient, safe storage of bulk feed, which decreases cost of using bagged feed. GWS bulk bins are 14-gauge steel construction with sight glass, rain guard, ground opening lid, and feed door perfect for filling buckets. Capacity is based on

ground corn. Bulk bin sizes include 5-, 3-, and 1-ton stationary models. Portable bulk bins come in 3- and 1-ton models. GWS 3-Ton portable bulk bin has been upgraded to 10 ply tires. Some options available on 3-ton portable models include torsion axle, dual axles, fenders, lights, and 2-inch Bulldog coupler.

Another hot item is the GWS

all steel construction 10-foot feed bunk. It is ideal for easily feeding large or small herds of livestock. A great feature is over lapping ends that allow bunks to be bolted together. GWS bunks make great single bunks or work very well for inline feeding. Bunks are 14-gauge steel with heavy duty legs. The ten-foot feed bunk weighs approximately 150 pounds, so they are heavy

enough to stand up to livestock but light enough to move. Another important feature is drain holes in all four corners.

GWS continues to build quality products while trying to maintain reasonable prices for farmers and cattlemen. For more information, visit us at the OKC Farm Show in booths 4105 to 4107, call GWS at 660-476-5598 or visit greenswelding.com. ♦

VISIT BOOTH 2041-2043
TO TALK TO A LOCAL REP
AND LEARN ABOUT THE
NEXGEN VARIETIES BEST
SUITED FOR YOUR AREA!



www.nexgencottonseed.com

 [amicotnexus](https://www.facebook.com/amicotnexus)

 [amicotinc](https://www.instagram.com/amicotinc)

 [nexgencotton](https://twitter.com/nexgencotton)



Americot® and the Boll Design, NexGen® and The Next Generation of Cotton® are registered trademarks of Americot, Inc. #C19210KCF5

HIGH PLAINS
JOURNAL

Stop by
Booth # 6111

to find out about
**HPJ products &
services!**

www.hpj.com

WHERE WHAT IF BECOMES

WHAT IF

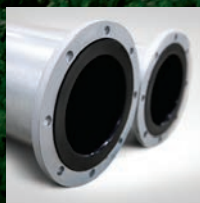
a pivot was as easy to use as your smartphone?



Zimmatic™ advanced control panels

WHAT IF

water quality issues were no longer an issue?



Zimmatic poly-lined pipe

WHAT IF

irrigation monitoring was accessible to every grower?



FieldNET Pivot Watch™

For more than 50 years, Lindsay has turned growers' "what ifs" into "what is" using customer-first innovation to continuously make irrigation more efficient and more effective.

WHAT IS.

WHAT IF

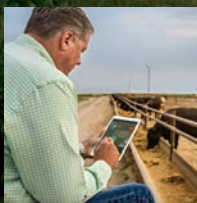
a monitor and control platform could help you see into the future?

WHAT IF

irrigation recommendations were generated daily, automatically, with no extra equipment?



FieldNET with WaterTrendSM



FieldNET AdvisorTM

CONTACT YOUR LOCAL ZIMMATIC DEALER TO LEARN MORE ABOUT OUR SOLUTIONS.

Duke, OK
Salt Fork Irrigation
580-679-3832

Eakly, OK
Pierce Irrigation
405-301-7971

Gore, OK
Pierce Irrigation
901-546-9208

Guymon, OK
Panhandle Irrigation, LLC
580-468-3511

Yukon, OK
Pierce Irrigation
405-354-8804

zimmatic.com

© 2021 Lindsay Corporation. All rights reserved. Zimmatic, FieldNET, FieldNET Pivot Watch, WaterTrend and FieldNET Advisor are registered trademarks of Lindsay Corporation.

LINDSAY

DewEze launches 'Squeeze Out Hunger' campaign

In an effort to increase food insecurity awareness within local communities, DewEze recently announced a new campaign to help squeeze out hunger.

"We've faced a year the likes of which none of us experienced before," said Tim Penner, Harper Industries' president. "But our customers are resilient and con-

tinue to produce the food that people depend on. This campaign falls in line with our core values, and together with our customers, we can provide hope through this time of need."

For the next 100 days, DewEze will donate \$100 to a local food bank with every bale bed purchase. Through their online war-

ranty registration, DewEze customers will be able to highlight a food bank of their choosing. The give back program not only helps get food to neighbors in need, but also assists food pantries in stretching their budgets to make the greatest impact.

Harper Industries kicked off the campaign with its own

food drive in March. Employees delivered two crates of non-perishable food and presented a \$1,000 check to the local Harper Mission Mart.

The Squeeze Out Hunger drive ends July 10. For more details on the campaign or to register your new DewEze Bale Bed, visit www.deweze.com. ♦



HELP US FIGHT HUNGER!

FOR EVERY BED SOLD THROUGH JULY 10, 2021, DEWEZE WILL MAKE A \$100 DONATION TO YOUR LOCAL FOOD BANK.

sales@deweze.com | (800) 835-1042



\$100 FOR 100 DAYS



Stop by
High Plains
Journal
Booth # 6111
for
OKC Farm Show
promotions
or specials!

www.hpj.com

Sooner Scale, Inc. Any Animal • Any Load • Everytime!

The accurate, dependable way to increase your profits while reducing your weighing time.

SSI manufactures a complete line of Side Rail and Flat Top model truck scales and Livestock scales. All models are NTEP approved and can be made portable.

We also design and build custom units to meet specific application needs.

www.soonerscale.com



2428 SW 14th • PO Box 82386

Oklahoma City, OK 73148 • Phone: 800-759-3444





24 & 26" Heavy Pipe Splits • 20' Lengths • 20,000 Sold

Yukon, OK • 405-350-8555 • www.lifetimefeedbunks.com

Lewis Cattle Oilers

the **NO FLY ZONE**



"My favorite thing is I haven't treated a single cow for pink eye and it is very well built. We bought three and I think we are going to buy three more because we are very happy with the simplicity and effectiveness"

-Gabe Ramsey, Falls City NE



Protecting your herd from ALL external parasites...including lice **ALL YEAR LONG!**

LEWIS
USA
Cattle Oiler Co
EST. 1966

YOUR SOLUTION TO EXTERNAL PARASITE PROBLEMS

1. INCREASE RATE OF GAIN
2. REDUCE DISEASE AND INFESTATION
3. REDUCE STRESS
4. ELIMINATES MAN POWER
5. NO WASTE OF PRODUCT

GUARANTEED SERVICE AFTER THE SALE



888-256-5544/620-408-6387

WWW.USALEWISCATTLEOILERS.COM